



Microsoft®
System Center
User Group Sweden 

Client Trends

Jörgen Nilsson

Stefan Schörling

www.scug.se



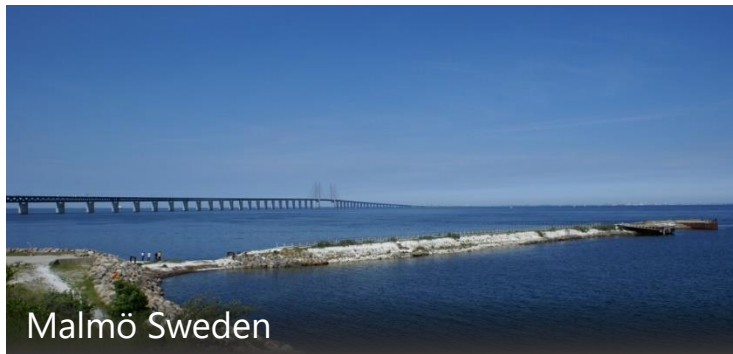
YouTube



Stefan Schörling



Jörgen Nilsson



Malmö Sweden



@CCMEXEC



Principal
Consultant

Doing ECM all
my life ;-)



Ccmexec.com
4Sysops.com



Enterprise
Mobility MVP

Trender

1. Mobilitet
2. Säkerhet
3. MDM/mobil plattform
4. Windows 10
5. Modern hantering



Mobilitet



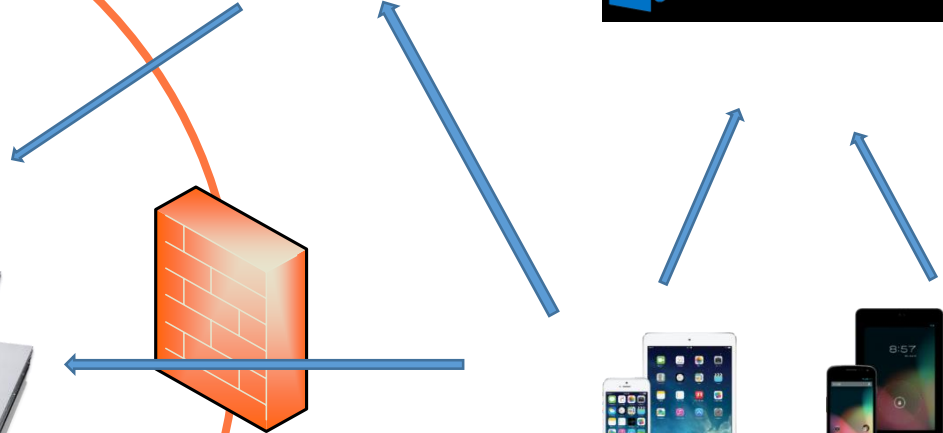
Azure
Application
Proxy



Office 365



OneDrive



Säkerhet

Microsoft Security – Prio 1

The best antivirus software for Windows Client Business User

Tested operating systems in your selection: [Windows 10](#) | [Windows 8](#) | [Windows 7](#) | [Windows XP](#)

Windows 10 Click on the logo to display the test series.

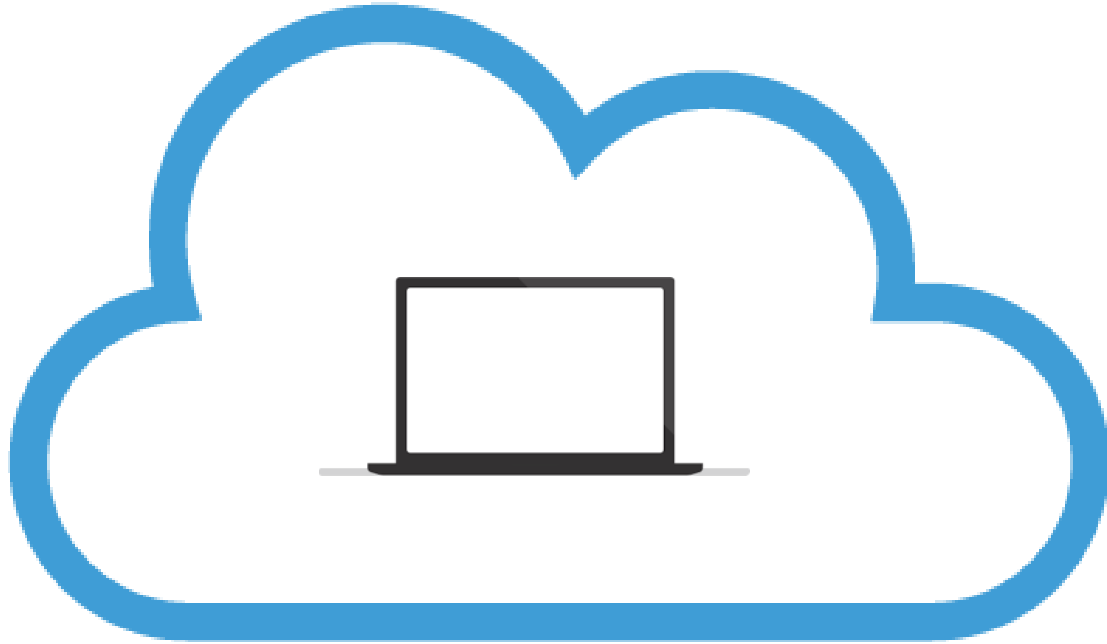
Windows 8/8.1 Click on the logo to display the test series.

Windows 7 February 2017

- February 2017
- August 2016
- February 2016
- August 2015
- April 2015
- December 2014
- August 2014
- February 2014
- August 2013
- June 2013
- December 2012
- October 2012
- June 2012
- April 2012
- December 2011
- August 2011

Name	Protection	Performance	Usability
 AVG AVG Antivirus Business 16	●●●●●●●●●●●●●●●●	●●●●●●●●●●●●●●●●	●●●●●●●●●●●●●●●●
 Bitdefender Bitdefender Endpoint Security 6.2	●●●●●●●●●●●●●●●●	●●●●●●●●●●●●●●●●	●●●●●●●●●●●●●●●●
 F-Secure F-Secure Client Security 12.30	●●●●●●●●●●●●●●●●	●●●●●●●●●●●●●●●●	●●●●●●●●●●●●●●●●
 G Data G Data AntiVirus Business 14.0	●●●●●●●●●●●●●●●●	●●●●●●●●●●●●●●●●	●●●●●●●●●●●●●●●●
 Intel Security McAfee Intel Security McAfee Endpoint Security 10.2	●●●●●●●●●●●●●●●●	●●●●●●●●●●●●●●●●	●●●●●●●●●●●●●●●●
 Kaspersky Lab Kaspersky Lab Endpoint Security 10.2	●●●●●●●●●●●●●●●●	●●●●●●●●●●●●●●●●	●●●●●●●●●●●●●●●●
 Kaspersky Lab Kaspersky Lab Small Office Security 5	●●●●●●●●●●●●●●●●	●●●●●●●●●●●●●●●●	●●●●●●●●●●●●●●●●
 Microsoft Microsoft System Center Endpoint Protection 4.10	●●●●●●●●●●●●●●●●	●●●●●●●●●●●●●●●●	●●●●●●●●●●●●●●●●
 SEQRITE Seqrte Endpoint Security 17.00	●●●●●●●●●●●●●●●●	●●●●●●●●●●●●●●●●	●●●●●●●●●●●●●●●●
 SOPHOS Sophos Endpoint Security and Control 10.6	●●●●●●●●●●●●●●●●	●●●●●●●●●●●●●●●●	●●●●●●●●●●●●●●●●
 Symantec Symantec Endpoint Protection 14.0	●●●●●●●●●●●●●●●●	●●●●●●●●●●●●●●●●	●●●●●●●●●●●●●●●●
 Symantec Symantec Endpoint Protection Cloud 22.8	●●●●●●●●●●●●●●●●	●●●●●●●●●●●●●●●●	●●●●●●●●●●●●●●●●
 TREND MICRO Trend Micro Office Scan 12.0	●●●●●●●●●●●●●●●●	●●●●●●●●●●●●●●●●	●●●●●●●●●●●●●●●●

Clients for the Cloud

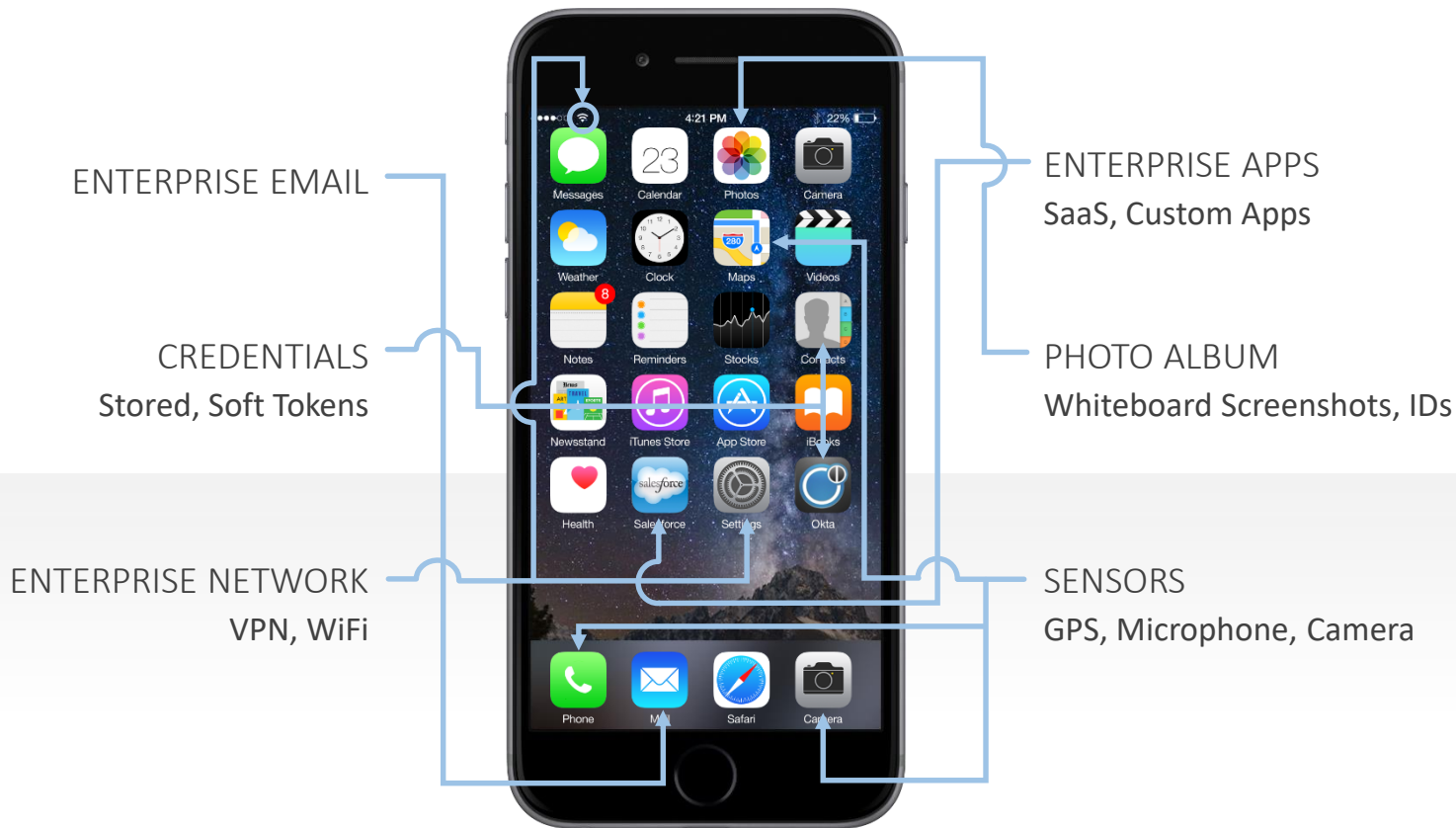


MDM/Mobil plattform

Mobiler inte en telefon längre!

- En applikationsplattform
- Används mindre och mindre för att ringa med
- Skall man börja konsumera appar/utveckla egna måste man hantera sin mobila plattform
 - Säkerhet
 - Versioner av OS
 - Användarstöd

Your mobile device is a gold mine for hackers



Windows 10

Intel Kaby Lake

Show all

✓ 16. Where can I read more about Microsoft's approach to supporting the latest silicon innovation on Windows?

^ 17. How does Microsoft plan to provide support for new processors and chipsets when they are released?

As new silicon generations are introduced, they will require the latest Windows platform at that time for support. This enables us to focus on deep integration between Windows and the silicon, while maintaining maximum reliability and compatibility with previous generations of platform and silicon. For example, Windows 10 will be the only supported Windows platform on Intel's upcoming "Kaby lake" silicon, Qualcomm's upcoming "8996" silicon, and AMD's upcoming "Bristol Ridge" silicon.

"Windows 7 was designed nearly 10 years ago before any x86/x64 SOCs existed. For Windows 7 to run on any modern silicon, device drivers and firmware need to emulate Windows 7's expectations for interrupt processing, bus support, and power states, which is challenging for WiFi, graphics, security, and more. As partners make customizations to legacy device drivers, services, and firmware settings, customers are likely to see regressions with Windows 7 ongoing servicing."



Windows 10 endast

As new silicon generations are introduced, they will require the latest Windows platform at that time for support. This enables us to focus on deep integration between Windows and the silicon, while maintaining maximum reliability and compatibility with previous generations of platform and silicon. For example, Windows 10 will be the only supported Windows platform on Intel's upcoming "Kaby lake" silicon, Qualcomm's upcoming "8996" silicon, and AMD's upcoming "Bristol Ridge" silicon

Building your next generation platform

- Enable Untrusted font blocking
- Use Credential Guard and new Windows 10 Features!
- Java, Adobe Reader – WHY?!
- Bitlocker, Microsoft LAPS, EMET



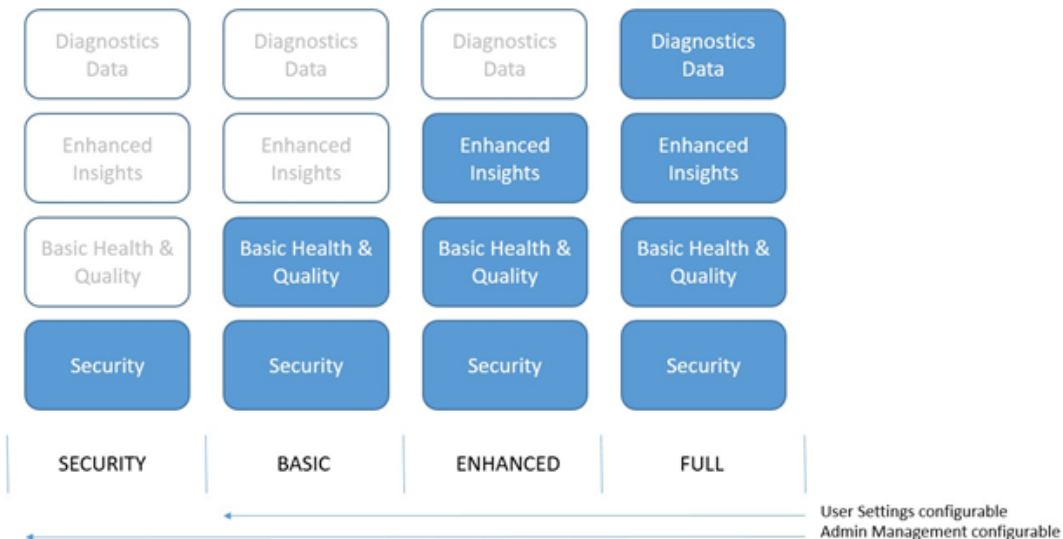
Windows 10 begränsningar i PRO

- Kan inte stänga av Consumer Experience
- Kan inte hantera Start meny
- Kan inte hantera TaskBar
- Kan inte stänga av Store, eller begränsa den till private store
- Kan inte begränsa sökningar till endast dator, Cortana kommer visa web search
- Ingen Enterprise LTSB tillgänglig för användning för exempelvis MT/labbar måste licensieras separat
- Credential /Device Guard saknas
- Applocker saknas
- App-V och UE-v kräver saknas
- <https://technet.microsoft.com/sv-se/itpro/windows/manage/group-policies-for-enterprise-and-education-editions>

Krav för KIOSK läge

Windows 10 edition	Universal Windows app	Classic Windows application
Mobile	✓	✗
Mobile Enterprise	✓	✗
Pro	✓	✗
Enterprise	✓	✓
Education	✓	✓

Telemetry



Security level

The Security level gathers only the telemetry info that is required to keep Windows devices, Windows Server, and guests protected with the latest security updates. This level is only available on Windows Server 2016, Windows 10 Enterprise, Windows 10 Education, Windows 10 Mobile Enterprise, and Windows IoT Core editions.

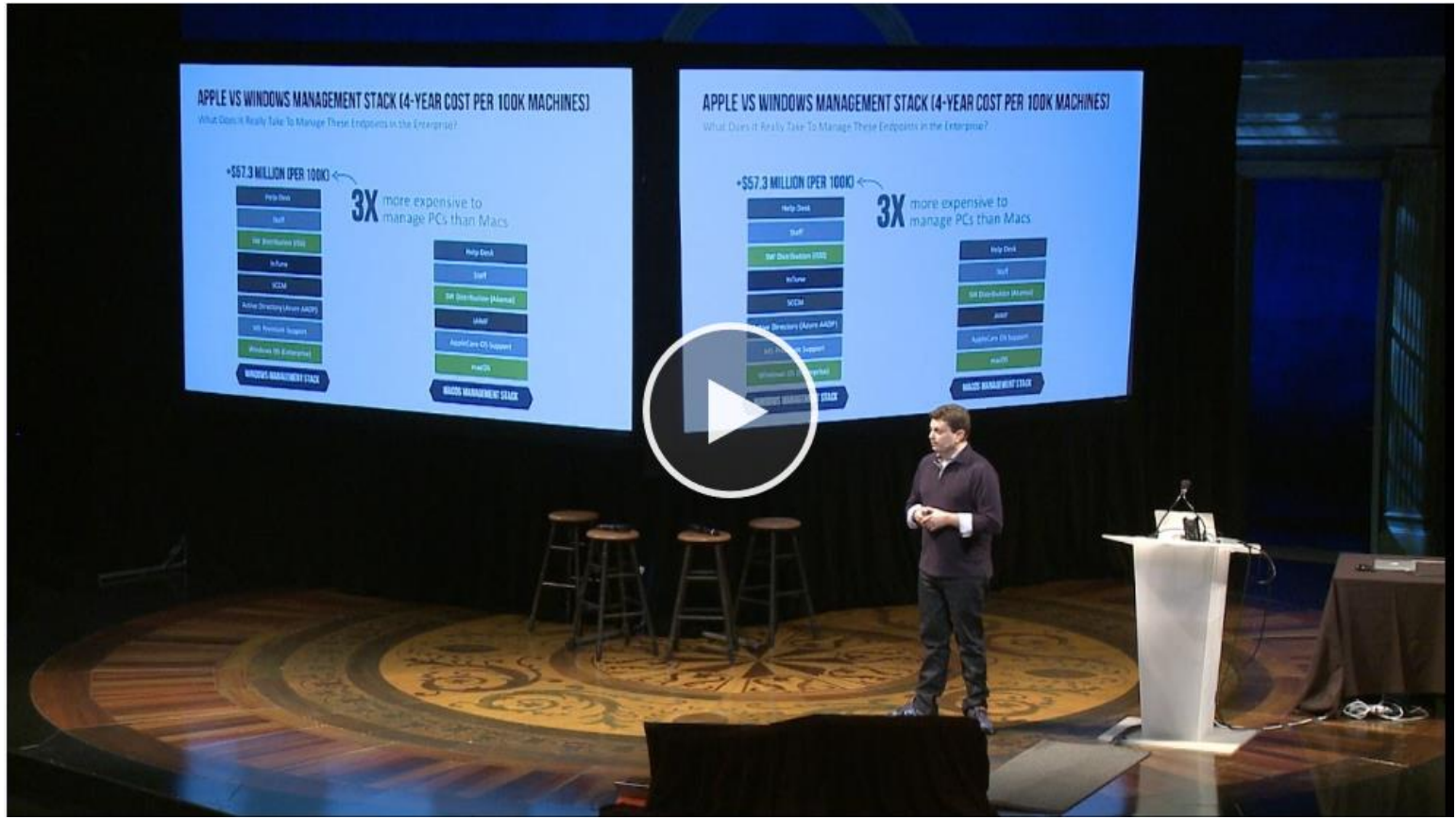
Modern hantering

Varför modern hantering?

- Bättre användarupplevelse
- Mobilitet



Mac tre gånger billigare än PC???



System Center User Group



www.scug.se



www.youtube.com/scugse



[#scugse](https://twitter.com/scugse)