

What's new in ConfigMgr

(ConfigMgr 1702 and 1706)

Supported versions

Version History

1

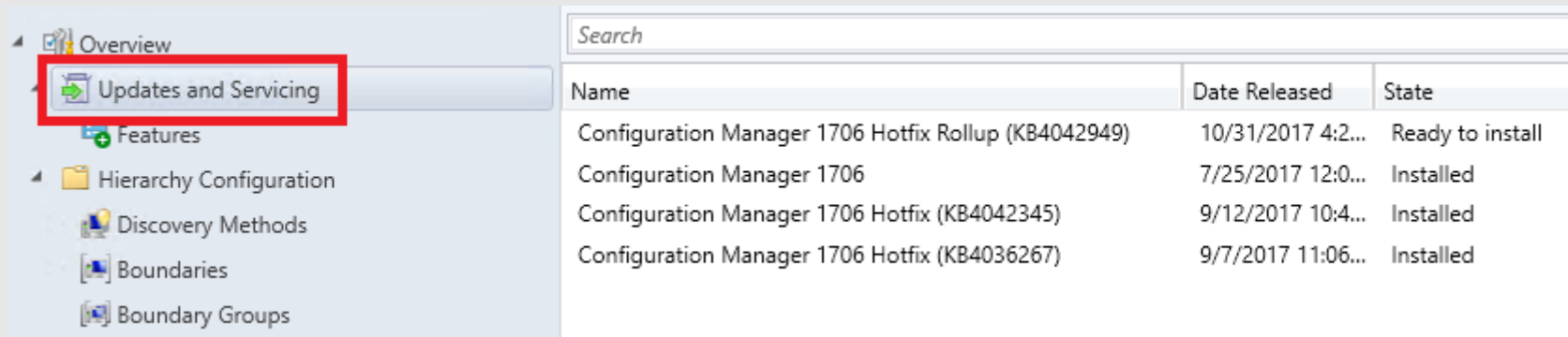
Version	Availability Date	Support End Date
1706	July 31, 2017	July 31, 2018
1702	March 27, 2017	March 27, 2018
1610	November 18, 2016	November 18, 2017
1606	July 22, 2016	July 22, 2017
1602	March 11, 2016	March 11, 2017
1511	December 8, 2015	December 8, 2016

Deprecated Support

- Windows Server 2008 and Windows Server 2008 R2 as site systems
 - Windows Server 2008 R2 still supported for builds prior to 1702
 - Both are supported as a DP
 - 1702 also supports SMP on Windows Server 2008 R2
- SQL Server 2008 R2
 - Still supported in builds prior to 1702
- Windows XP Embedded
 - Still supported in builds prior to 1702

Updates and Servicing

- Only downloads most current build automatically
 - Listed as "Available for install"
 - Prior builds not downloaded, but can be if desired and listed as "Ready for download"
- Automatic cleanup of older content
 - Works with new updates installed after 1702, for instance 1706

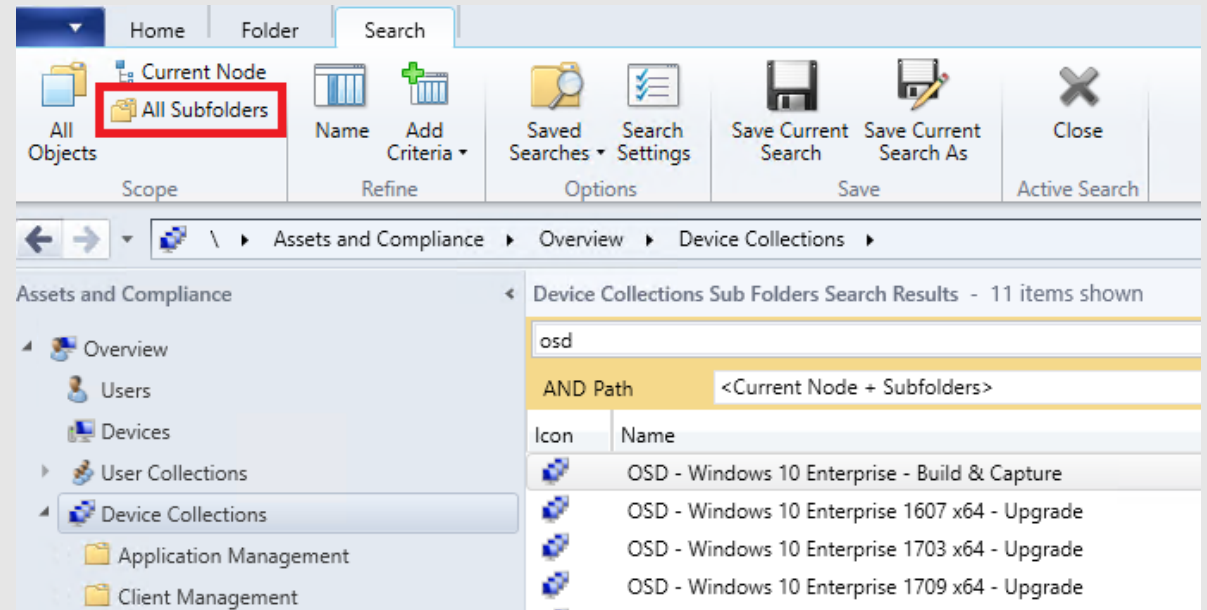


The screenshot shows the Configuration Manager console. The left pane has a tree view with the following items: Overview, Updates and Servicing (highlighted with a red box), Features, Hierarchy Configuration, Discovery Methods, Boundaries, and Boundary Groups. The right pane displays a table of updates with the following columns: Name, Date Released, and State.

Name	Date Released	State
Configuration Manager 1706 Hotfix Rollup (KB4042949)	10/31/2017 4:2...	Ready to install
Configuration Manager 1706	7/25/2017 12:0...	Installed
Configuration Manager 1706 Hotfix (KB4042345)	9/12/2017 10:4...	Installed
Configuration Manager 1706 Hotfix (KB4036267)	9/7/2017 11:06...	Installed

Console and Tools

- Support for High DPI consoles
- In-console search improvements
 - Shows path to objects found by search
 - Retains search text between nodes
- Provide feedback directly from the Configuration Manager Console
 - Feedback option from Ribbon
 - Feedback option from context menu

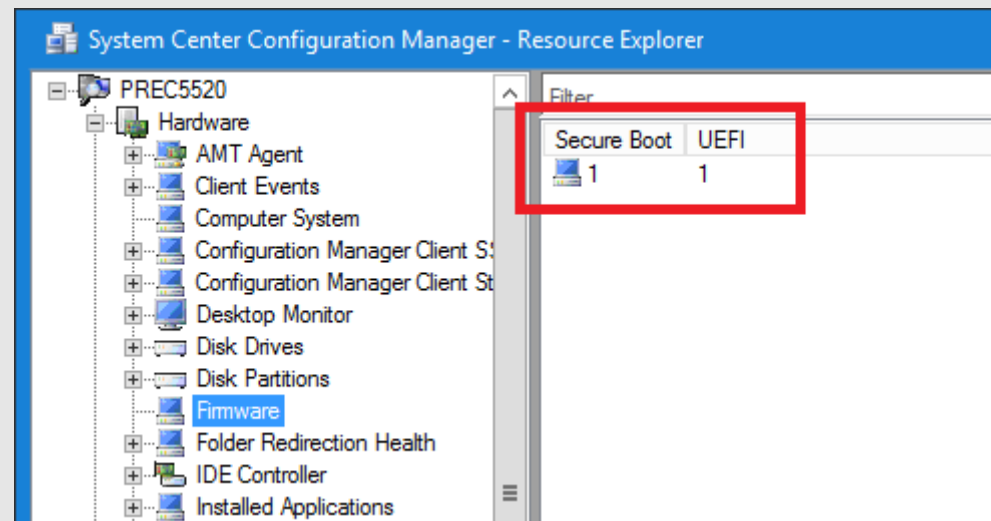


Demo

Console improvements

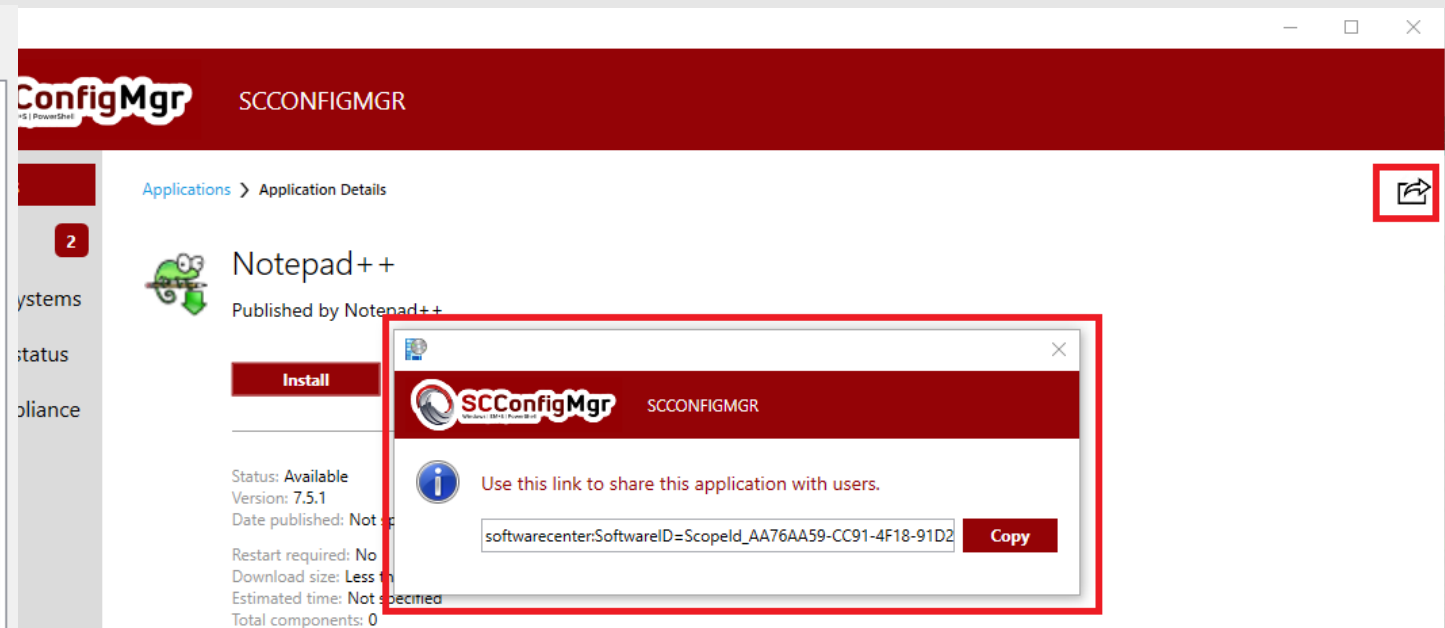
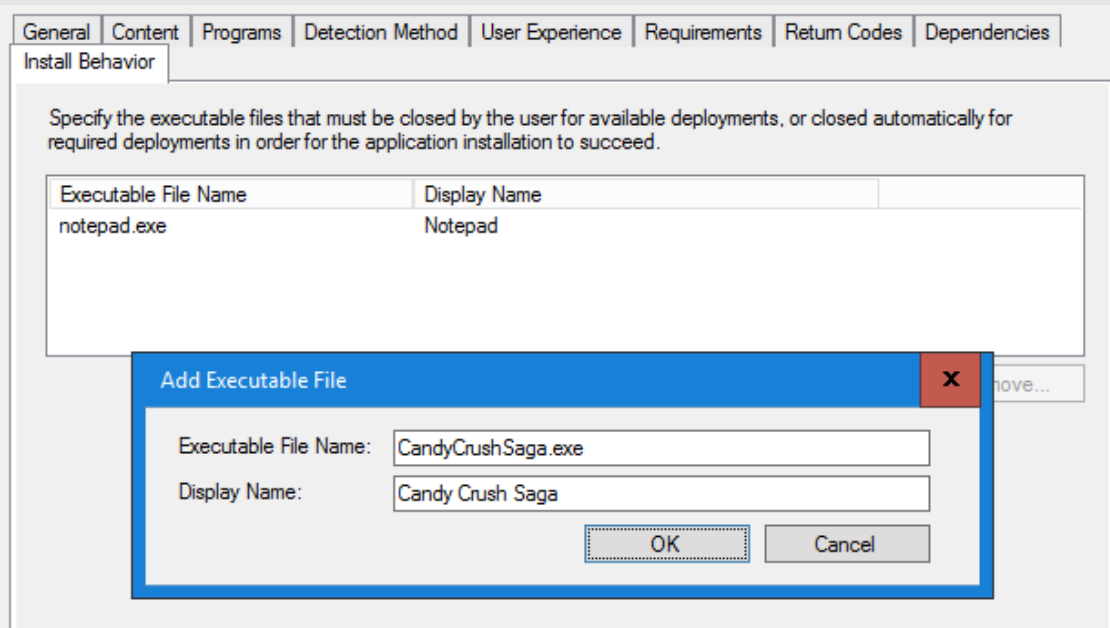
Inventory and Data

- Data warehouse service point
 - Long term data storage for Configuration Manager
 - Supports SQL Server Always On availability groups and failover clusters
 - Example usage:
 - Software Update compliance
 - SCEP historical reporting
- Hardware inventory reports UEFI startup status and Secure Boot state
 - Collected by default
 - SMS_Firmware



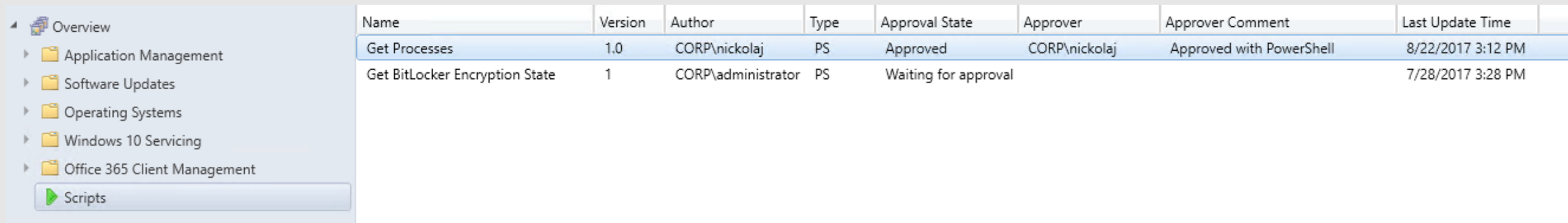
Application management

- Ability to designate, and control behavior, of 'blocking' programs when running an application deployment (Pre-release feature)
 - Can specify blockers and how to handle them in the properties of the application deployment type
- Deployment of Office 365 apps to clients from the dashboard
- Device Guard allows trust configuration for files and folders



Automation and Scripts

- Run PowerShell scripts directly from Configuration Manager
 - Import scripts to ConfigMgr
 - Software Library – Scripts
 - Edit unsigned scripts in ConfigMgr Console
 - Mark as approved or denied
 - Run on collections of Windows clients
 - Don't need to deploy, they run (near) real time
 - Monitor results in the ConfigMgr Console
 - Monitoring – Script Status



Name	Version	Author	Type	Approval State	Approver	Approver Comment	Last Update Time
Get Processes	1.0	CORP\nickolaj	PS	Approved	CORP\nickolaj	Approved with PowerShell	8/22/2017 3:12 PM
Get BitLocker Encryption State	1	CORP\administrator	PS	Waiting for approval			7/28/2017 3:28 PM

Demo

Run Scripts

Mobile Device Management (Intune hybrid)

- Many new compliance settings for iOS
- Support for Android for Work
- Android and iOS enrollment restrictions
 - Block enrollment of personal devices
- Ability to deploy volume purchased iOS apps to devices
- Support for iOS VPP for Education
- Support for multiple VPP tokens
- Ability to deploy own Line-of-Business apps in Windows Store for Business
- Conditional access check for 'non-compliant' apps

Azure integration

- New integration with Azure using a wizard to configure:
 - Cloud Management
 - Client authentication
 - Azure AD User Discovery
 - OMS Connector
 - Upgrade Readiness
 - Part of Windows Analytics
 - Windows Store for Business

Configure Azure Services

The wizard helps you deploy and configure Azure services through Configuration Manager.

Select an Azure service and specify the name, description:

Name:

Description:

- Cloud Management
- OMS Connector
- Upgrade Readiness Connector
- Windows Store for Business

Description:

Deploying the Azure service for Cloud Management enables Configuration Manager clients to authenticate with the site using Azure Active Directory. You can also enable discovery of Azure Active Directory resources for this tenant.

Demo

Cloud Management Gateway and Azure integration

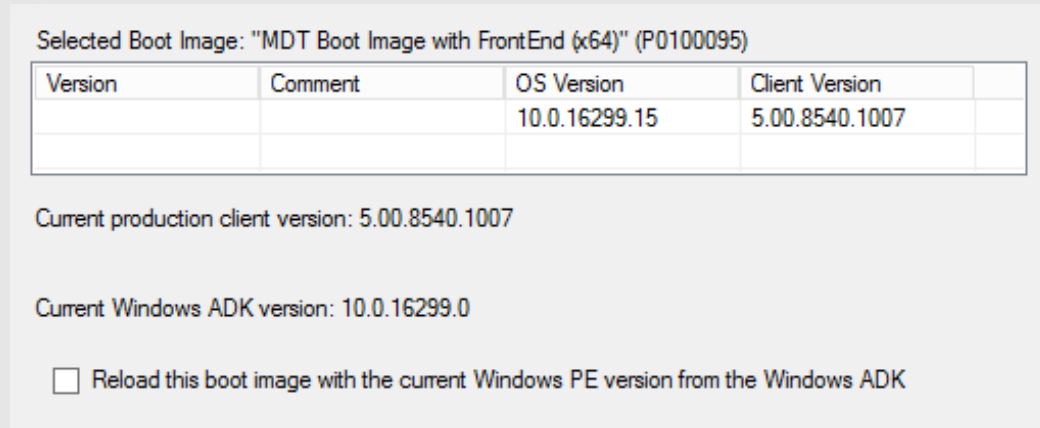
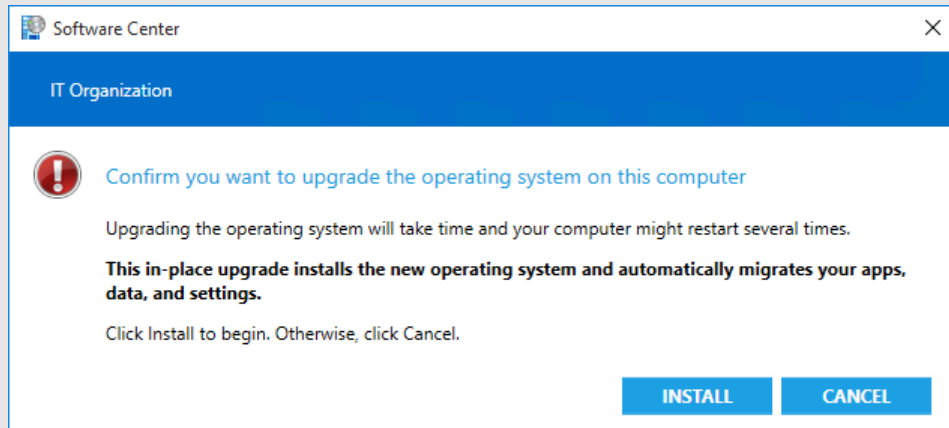
Content management

- Client Peer cache improvements to not access peer source if:
 - Low battery mode state
 - Has high CPU use
 - High disk queue
 - No available connections
 - Also adds three reports in “Software Distribution – Content”
- Client peer cache supports express updates for Windows 10 and Office 365
 - Enable Express Updates and Client Peer Cache
- Peer Cache no longer uses the Network Access Account to authenticate requests from peers

- Dig deeply into BranchCache: Learning from the experts
 - <https://myignite.microsoft.com/sessions/53470>

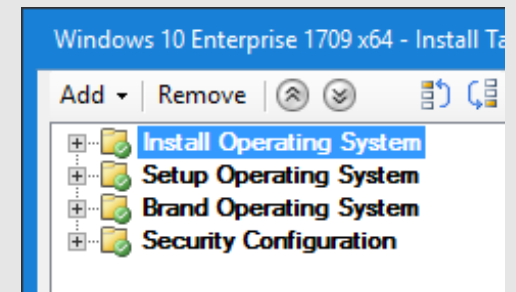
OS Deployment improvements

- Ability to pre-cache deployed available content in an Upgrade Operating System package and task sequence (pre-release)
- Regenerate Boot Images from installed Windows ADK
- Restart a failed task sequence, previous button
- Ability to configure any task sequence as 'high risk'
 - Customizable messages to end user
 - <https://docs.microsoft.com/en-us/sccm/protect/understand/settings-to-manage-high-risk-deployments>
- Notification of expected download size and run time



OS Deployment improvements

- Convert from BIOS to UEFI during an in-place upgrade
 - MBR2GPT.exe (Windows 10 version 1703)
- TSDisableProgressUI
 - <https://docs.microsoft.com/en-us/sccm/core/get-started/capabilities-in-technical-preview-1706#hide-task-sequence-progress>
- Collapsible Task Sequence Groups
- Increased application limit from 9 to 99
- Added multi-select of applications in the Install Applications step
- Can set an expiration on standalone media
- Package ID displayed in task sequence steps

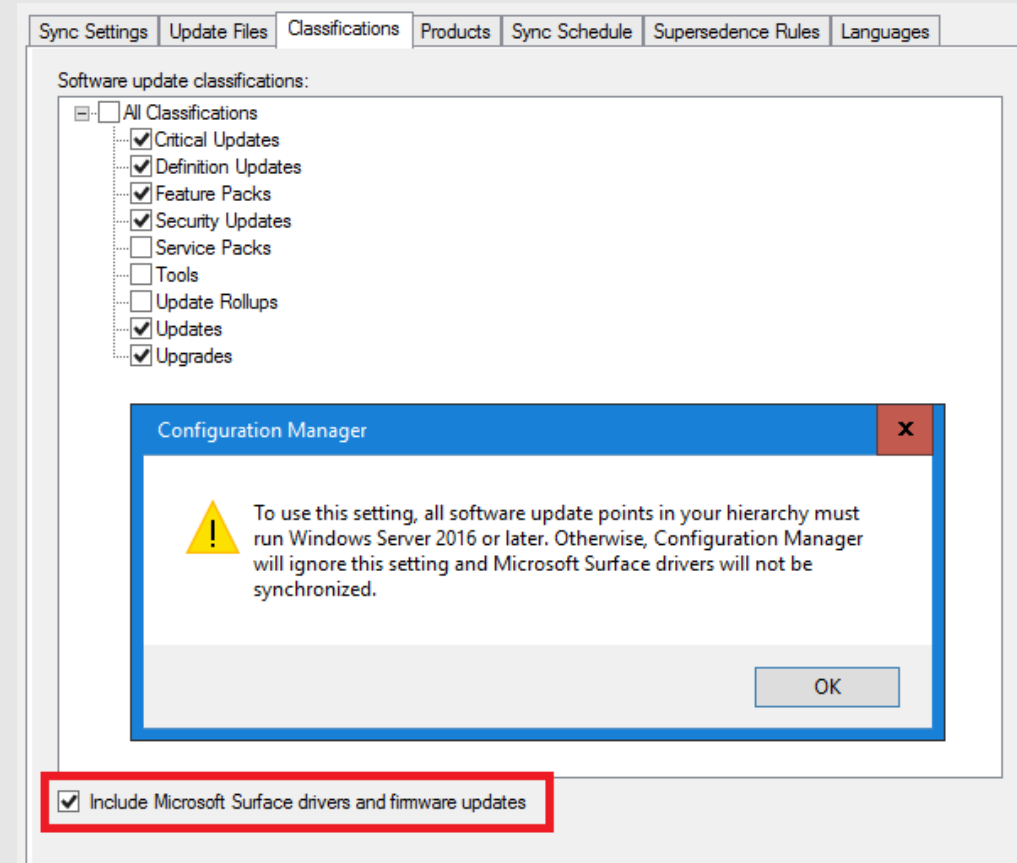


Demo

OS Deployment Improvements

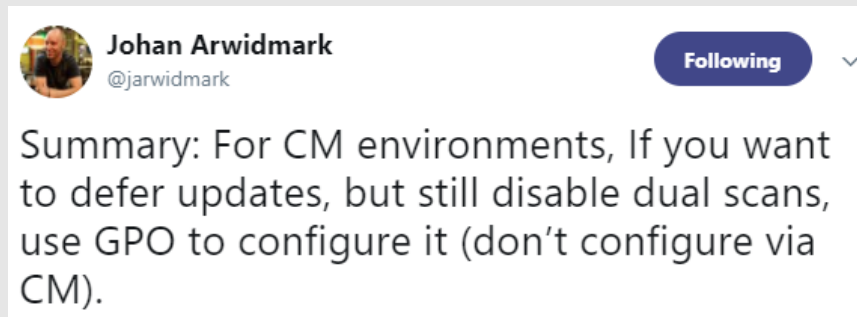
Software Update management

- Software Update points are boundary group aware
 - Supports fallback configuration like e.g. Distribution Points
- Manage Express installation files for Windows 10 updates and Office 365 updates
 - Reduced time to download Express Updates
- Management of Surface driver updates
 - Must enable as a classification for the Software Update point configuration
 - Software Update point must running Windows Server 2016
- Click-to-Run user experience for Office 365 updates
 - Popups, in-app notifications, and countdowns
 - Doesn't seem to work as stated in docs – update pending



Software Update management

- Windows Update for Business Policies node under Windows 10 Servicing
 - Configure deferral policies for Windows 10 Quality Updates or Feature Updates
 - Using these will automatically enable Dual Scan
 - “Remove access to use all Windows Update features”
 - Completely turn off access to Windows Update
 - “Do not allow update deferral policies to cause scans against Windows Update”
 - When enabled, will disable Dual Scan
- For ConfigMgr and deferral policies – use GPO settings instead
- What about Windows 10 version 1709 and Semi-Annual Channel?



Demo

Software Updates management

How do I get all of this?

Upgrade to ConfigMgr 1706

ConfigMgr Technical Preview

What's (hopefully) coming in the next production release

What are Technical Preview releases

- Pre-release builds that provide a look at new features that may get implemented in a future production release
- Technical Preview sites are for Production environments
- Limited in client count, operating systems and configuration
- Expire every 90 days if not kept up to date
- Latest baseline version is ConfigMgr TP 1711

Highlights from ConfigMgr TP 1707+

- Surface Device dashboard
 - Monitoring, Surface Devices
- Configure and deploy Windows Defender Application Guard policies
 - For Windows 10 Fall Creators Update
- Configure parameters for PowerShell scripts from Configuration Manager
- Software Center branding and customization
- Reboot clients using Client Notification channel
- Insight Management
- Co-management
- Client Desktop PXE
 - <https://www.ronnipedersen.com/2017/11/19/sccm-enable-desktop-clients-as-pxe-servers/>

Summary

- ConfigMgr is not dead
- You should really not be on any previous versions of ConfigMgr
- You want to keep ConfigMgr update to date
- Install a Technical Preview environment and test the new features before they're released in production