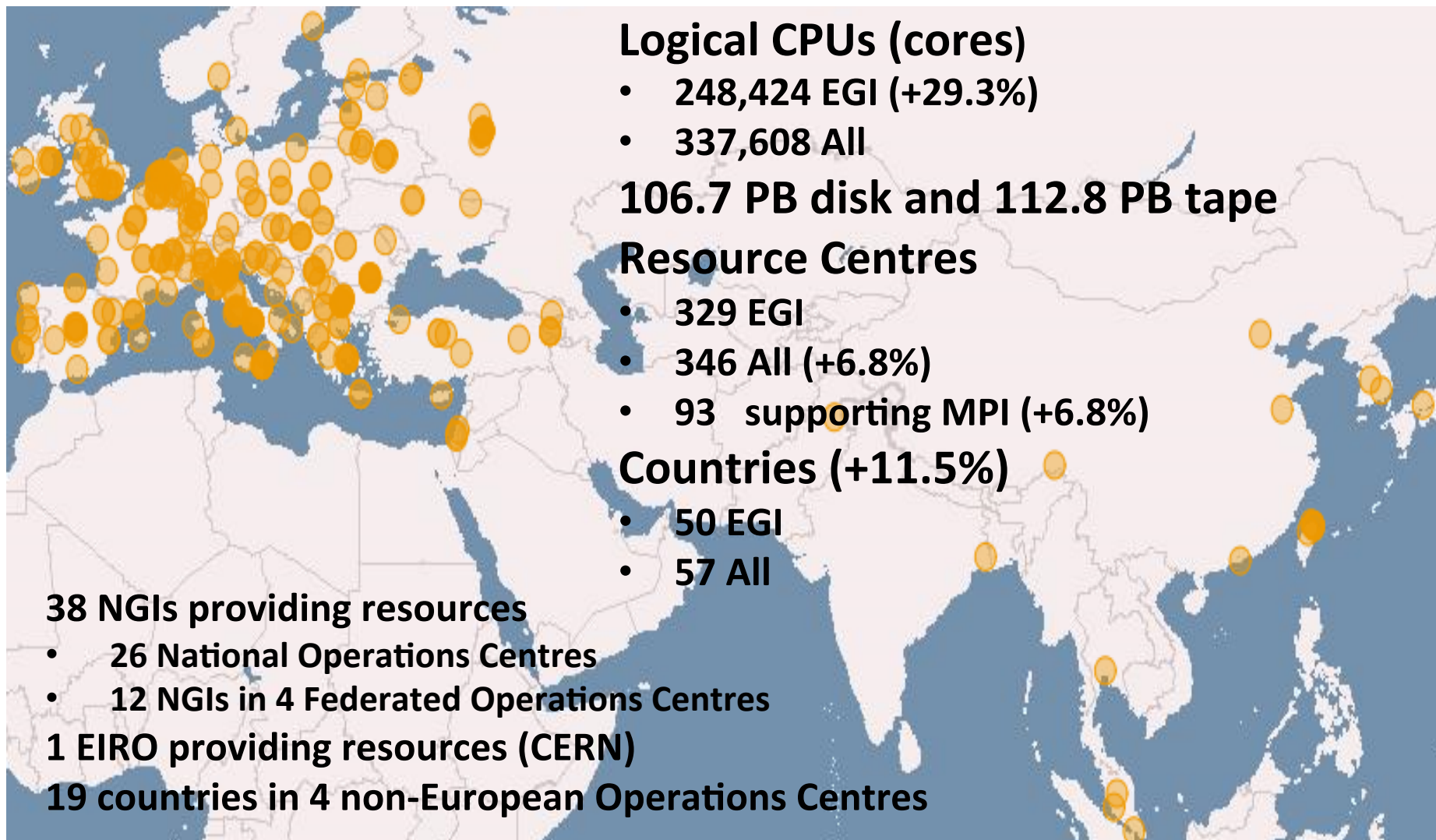
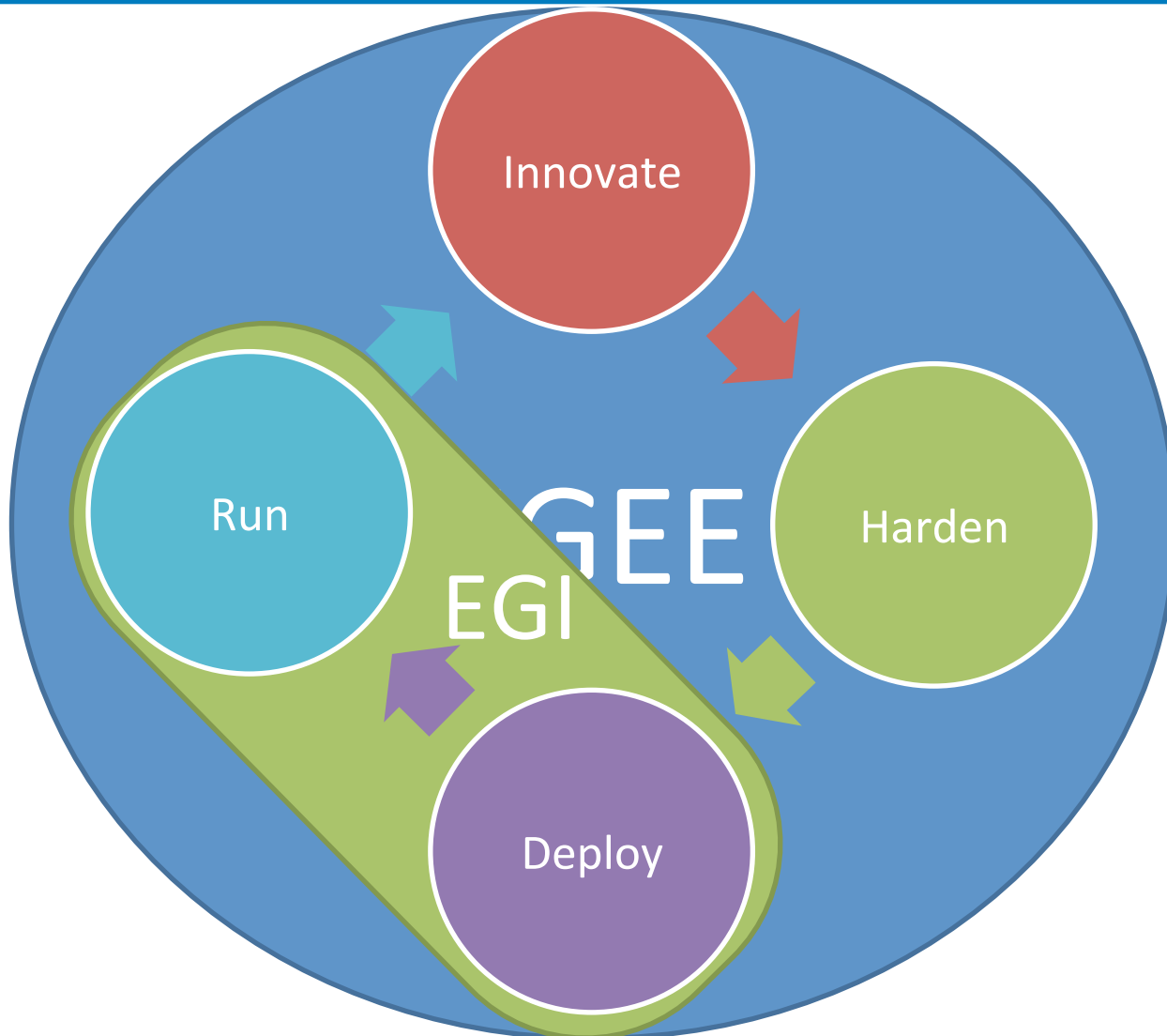


Organisation of e-Infrastructures

Steven Newhouse
EGI.eu Director



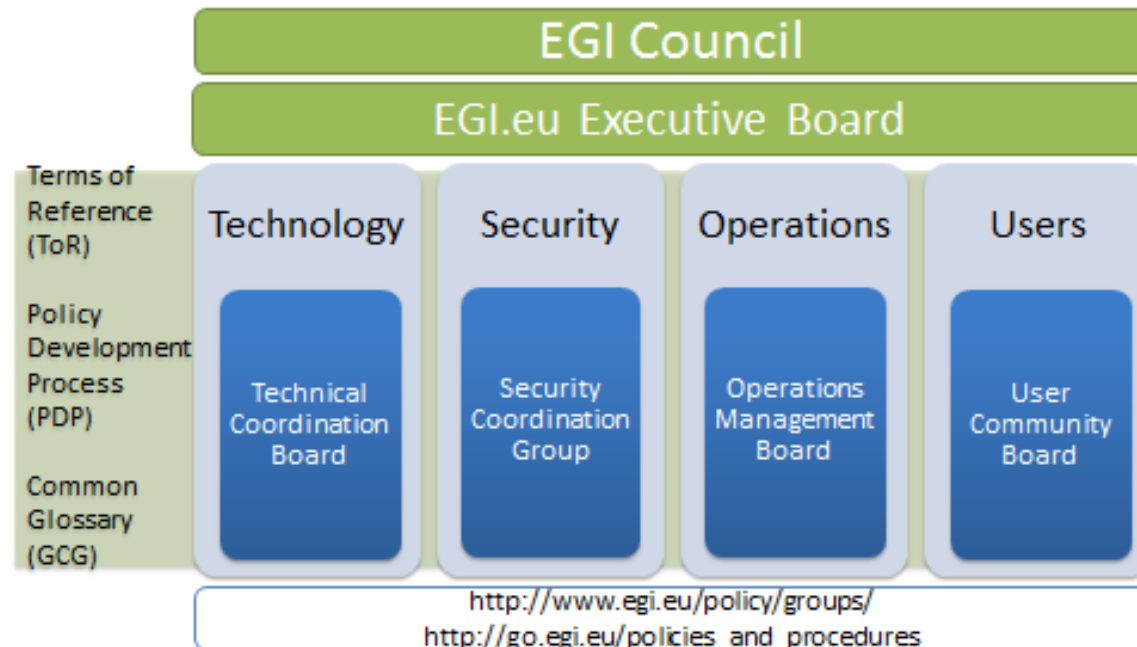
Innovation vs. Production



- Historically through National Grid Infrastructures
 - Federation of individual resource centres
 - Based in the academic and research community
- In the future... commercial services
 - They now have services (e.g. IaaS) that we can use
 - These capabilities *will* complement our own

Are we open enough for a competitive mixed economy?

Need to look up as well as down!



Participants:

- National mandates from EU27+
- GDP Derived voting scheme

Associated Participants:

- Subscribe to organisational goals (e.g. end-users)

European Commission

As our users call for better integrated services...
Do we need to provide integrated governance?
An e-Infrastructure ERIC?

PRACE

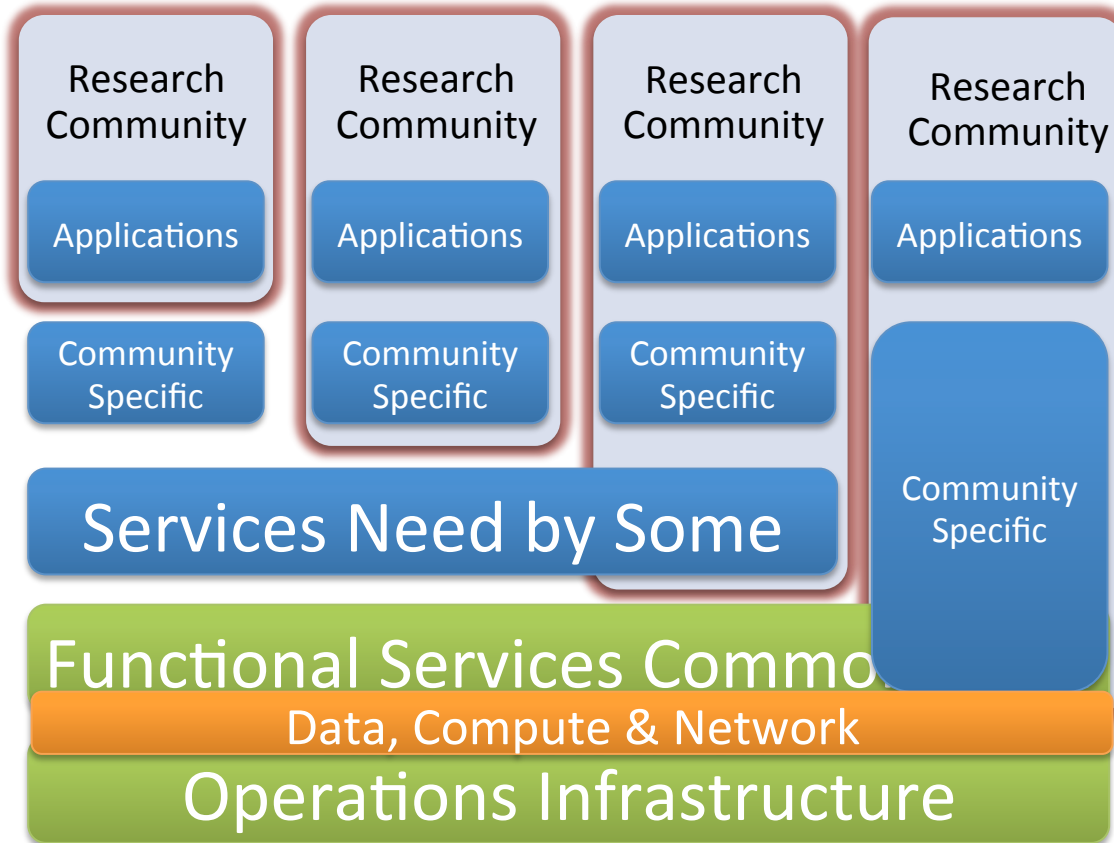
EGI

DANTE

NREN PC

- Customers of EU bodies are B2B model
 - NRENs/NGIs
 - European user communities (EIROs, ESFRI)
- National bodies operate B2C/B2B model
 - Deliver services to national end-users
 - Deliver services to local providers
- European bodies operate B2C model
 - Deliver services to custom
- Customers of EU bodies are NRENs/NGIs

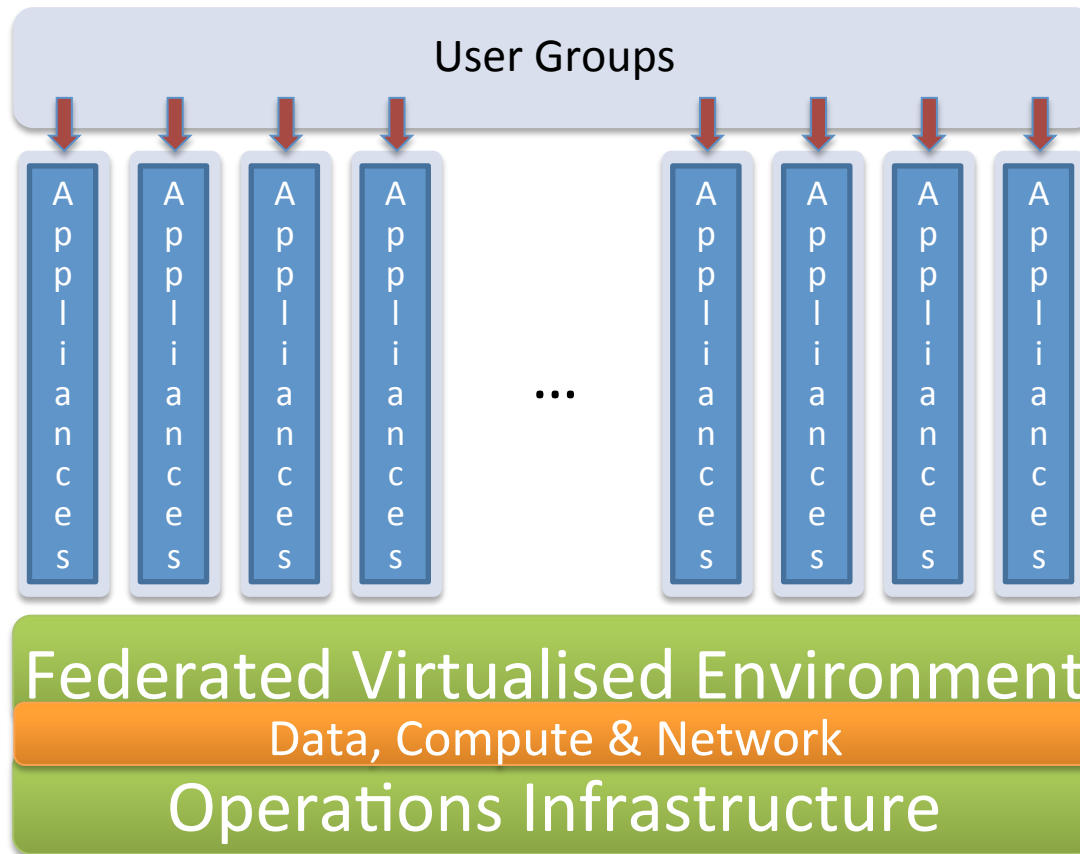
Evolving Infrastructure



Currently:

Cost of deployment limits the number of different service environments that can be supported

Evolving Infrastructure



Resources:

Research
Academic
Commercial

Applicances:

From some end-users
From the infrastructure provider
From a community's experts

- Technology & Governance Integration
 - Across & within e-Infrastructures
- Federation ‘best of breed’ e-Infrastructure
 - Federation: Critical for our user community
 - Standards enable open federation
 - Regardless of provider
 - Academic & Commercial should be the norm
 - Regardless of technology
 - Moving innovation to production → new providers

Users: What they want, where they want it!