

NORDUnet Update

René Buch

CEO

NORDUnet

Nordic Infrastructure for Research & Education



Key strategy drivers

- Globalization and International Competition

To push the scientific borders further Global Collaboration is necessary and to pool global resources and knowledge fx. CERN, eVLBI GLEON etc. This raises the competition between international scientists and institutions.

- Cross Boarder Collaboration

To be a recognized as participant in Global Research Projects it requires that national and regional institutions collaborate and pool resources. The Nordic NREN experience is that a coordinating and facilitating interregional coordination body add significant value to the national efforts as a common level play ground.

- Network Paradigm shift

In addition to the general usage of the network the requirements for specialized high capacity E2E connections are rapidly increasing. This requires a new approach to inter network and inter organizational provisioning and coordination.

- Interdependencies of various disciplines

In addition to the paradigm shift in networking the interdependencies between multiple disciplines like Networking, Storage, GRID, AAI etc. raises the international and inter regional coordination challenges to a new complexity level.



“NORDIC Infrastructure for Research and Education”

Mission:

- Serve the Nordic NRENS

The NORDUnet method of facilitating and coordinating Nordic & Global activities has proven very successful placing the Nordic NRENS in Line with major international players that would otherwise be unreachable at a cost efficiency level unobtainable on individual basis.

- Coordinate NORDIC NREN Development

- Nordic Projects
- GEANT Projects
- Global Projects

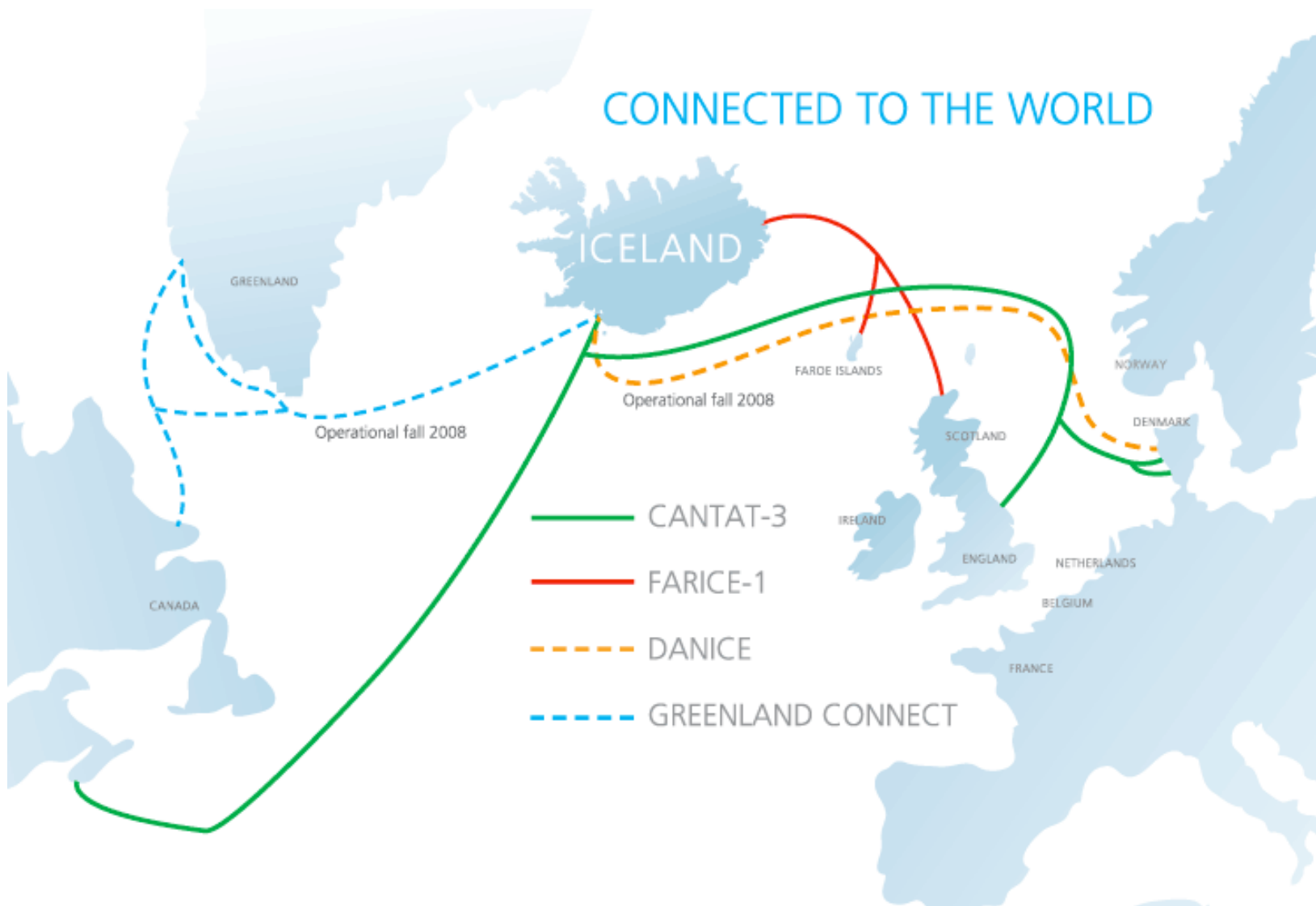
- eInfrastructure Services

- Nordunet3
- NDGF
- ...

- International Dimension

Facilitating and Coordinating Local-Global-Local contacts and project opportunities.





- **NORDUnet Network Services:**
 - **NorthernLight**
 - Pan Nordic Redundant Dark Fibre Optical Infrastructure
 - **NORDUnet NOX** (NorthernLight Optical X-Change)
 - Distributed Open Optical Exchange
 - **NORDUnet IP**
 - Pan Nordic Redundant IPv4 & IPv6 Infrastructure
 - **NORDUnet NUNOC**
 - 24x7 eInfrastructure operation centre.
- **NORDUnet Project Services**
 - **NORDUnet3**
 - **NDGF – Nordic Data Grid Facility**



Unique Hybrid Architecture for Next-Generation Transport Switching

“Processing” decoupled from “Switching”

•Universal Switching

- Agnostic switching architecture (“quantum-switching”)
- Switching synch traffic (circuits) or asynch traffic (packets) in native format (technology-independent)
- Non-stop forwarding (not affected by traffic congestion)

100% TDM | Any Traffic Mix | 100% Packet

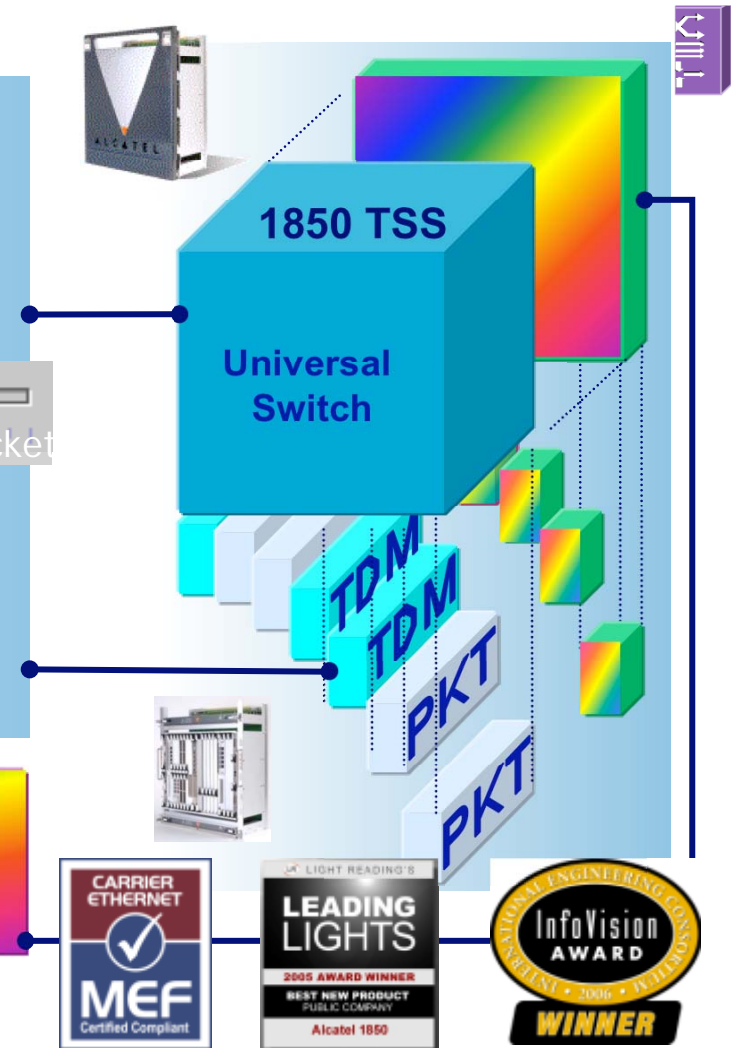
Specific Traffic Processing Line Cards

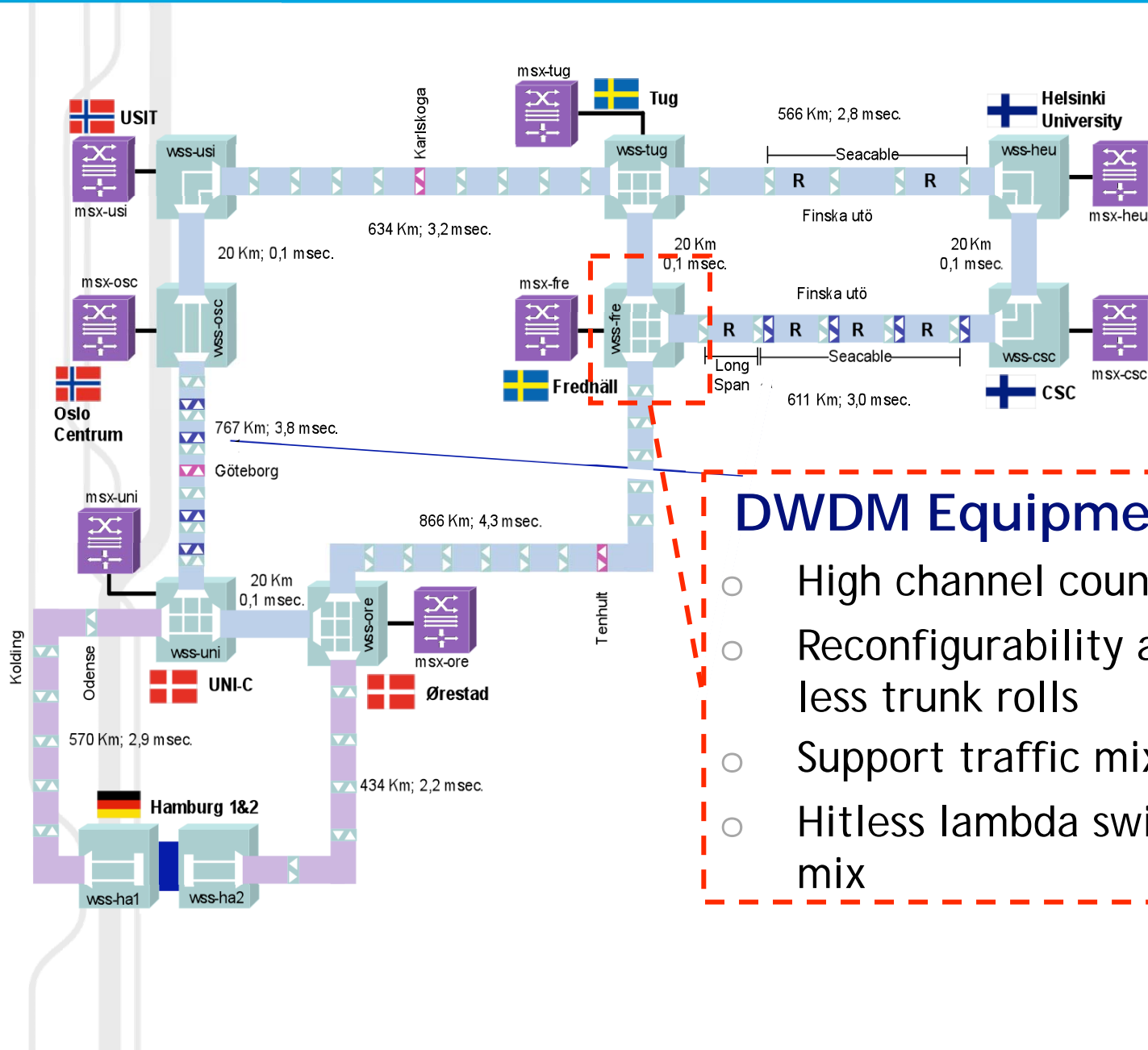
- Technology-dependent traffic line cards
- Host all specific traffic processing functions (classification, policing, perf monitoring, OAM, etc)
- Open to future packet-based protocols (T-MPLS)

Integrated WDM

- CWDM/DWDM, OADM, Mux/Demux, Transponders
- ROADM, OTH

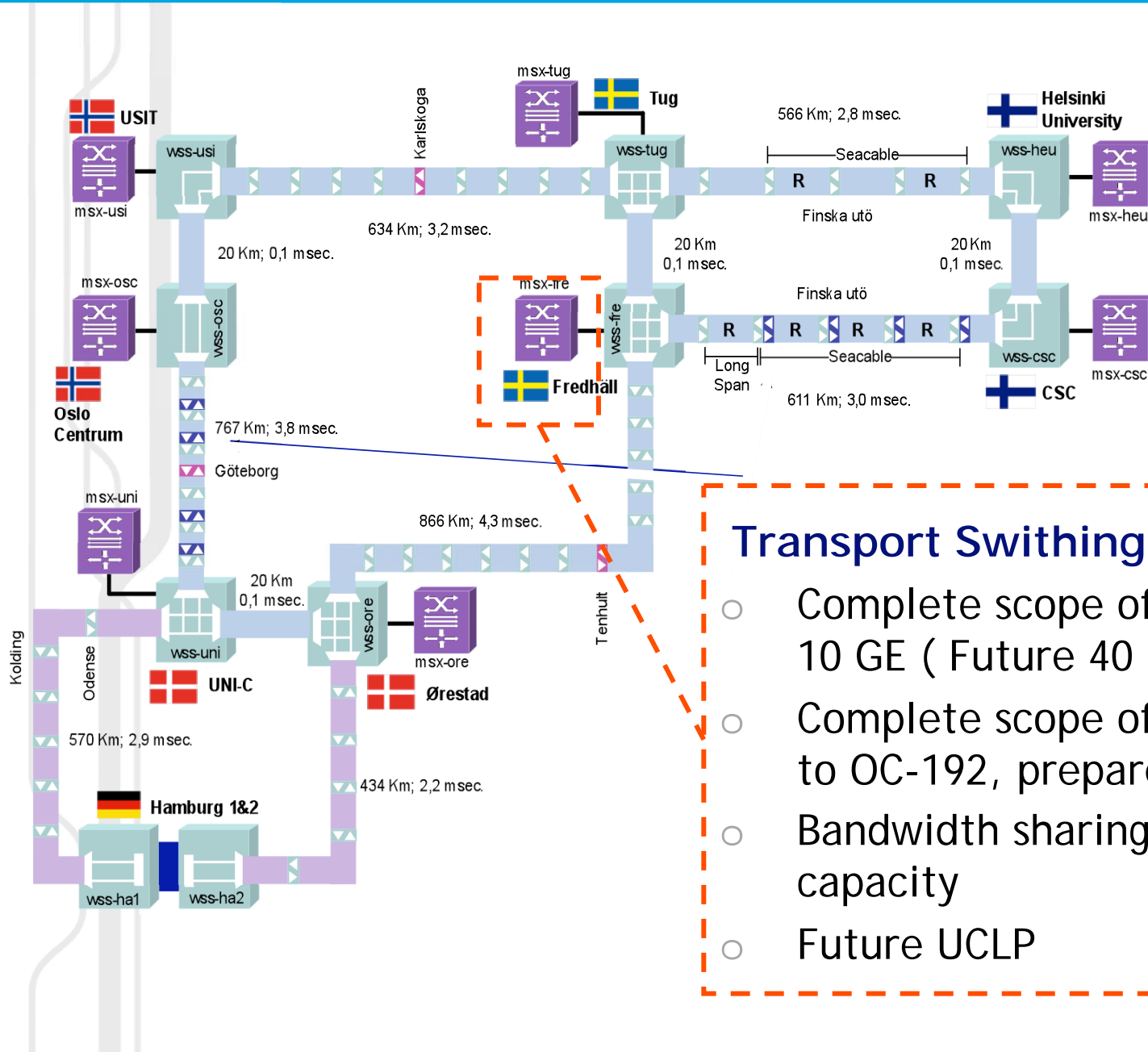
- Cost-optimized network consolidation
- Freedom in planning network resources, reduced investment risk





DWDM Equipment

- High channel count up to 88
- Reconfigurability and tunability for less trunk rolls
- Support traffic mix of 10G / 40G
- Hitless lambda switching of traffic mix



Transport Switching Equipment

- Complete scope of Ethernet 1 GE, 10 GE (Future 40 & 100G)
- Complete scope of SDH / SONET up to OC-192, prepared for OC-768
- Bandwidth sharing, dynamic use of capacity
- Future UCLP

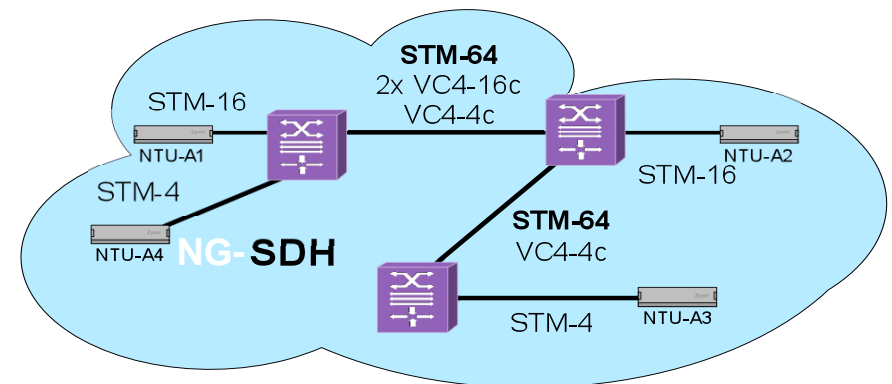
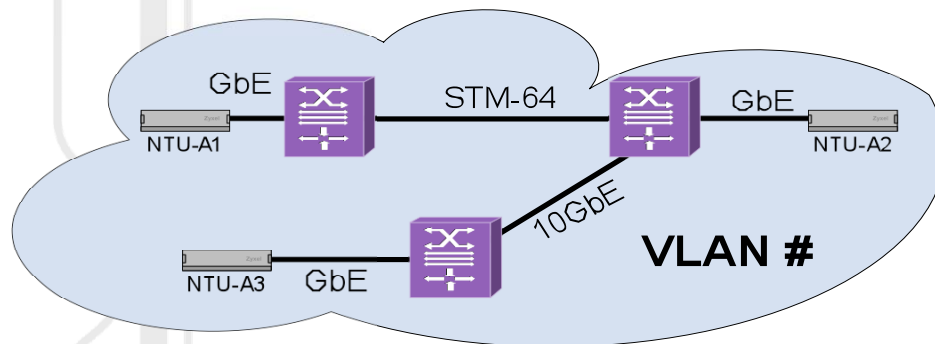


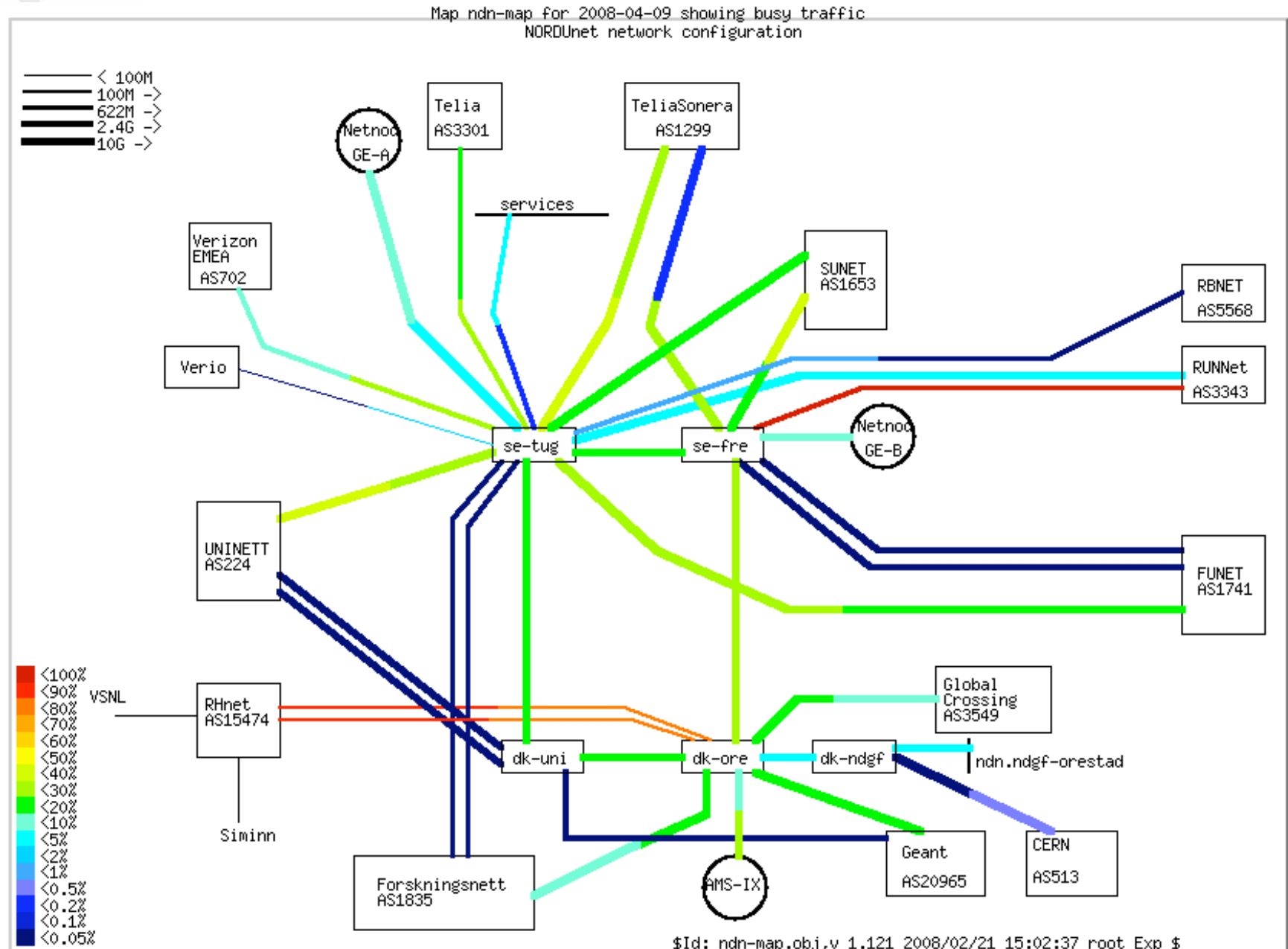
Unique Hybrid Architecture for Next-Generation Transport Switching

T-MPLS

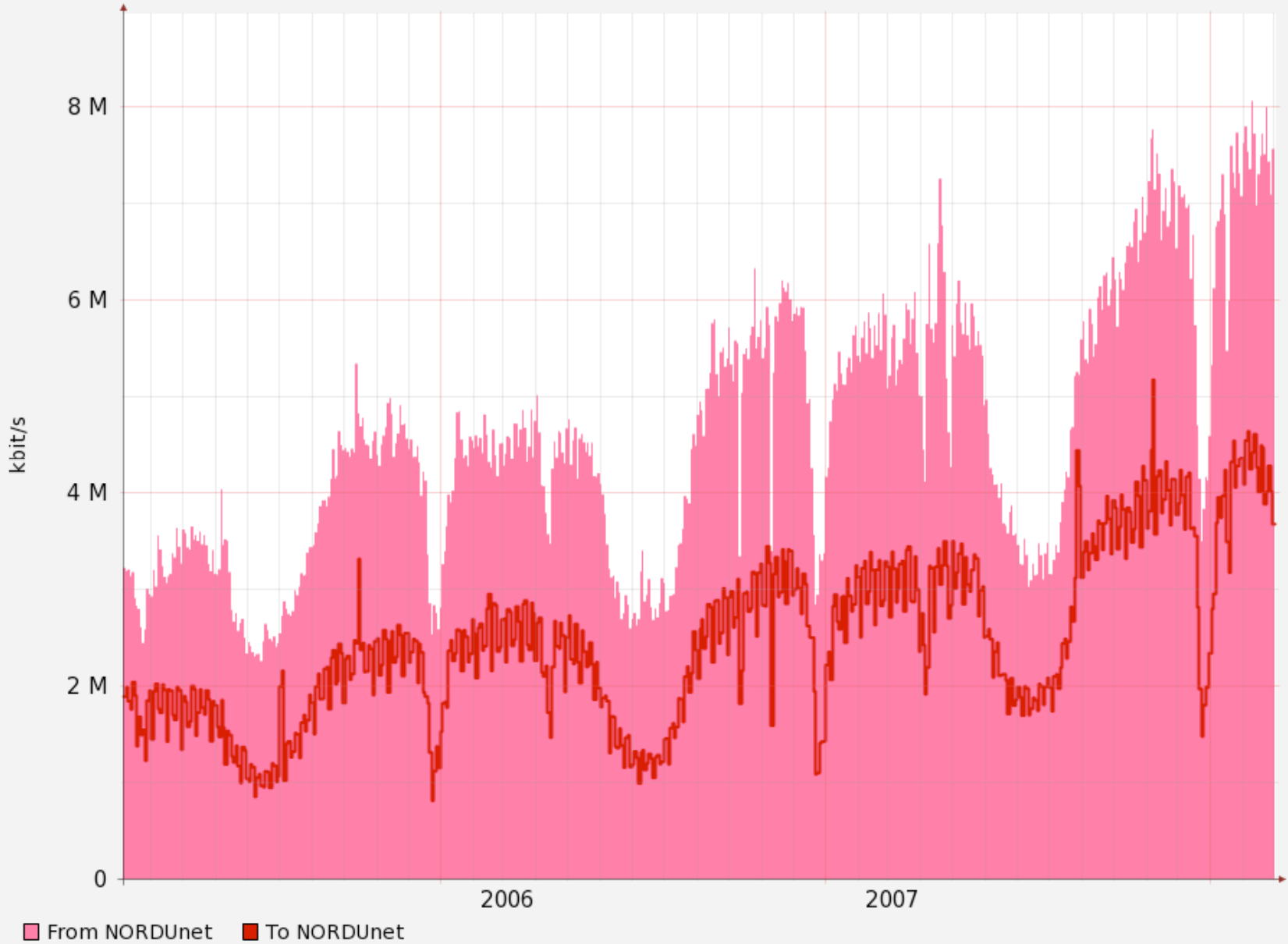
TSS

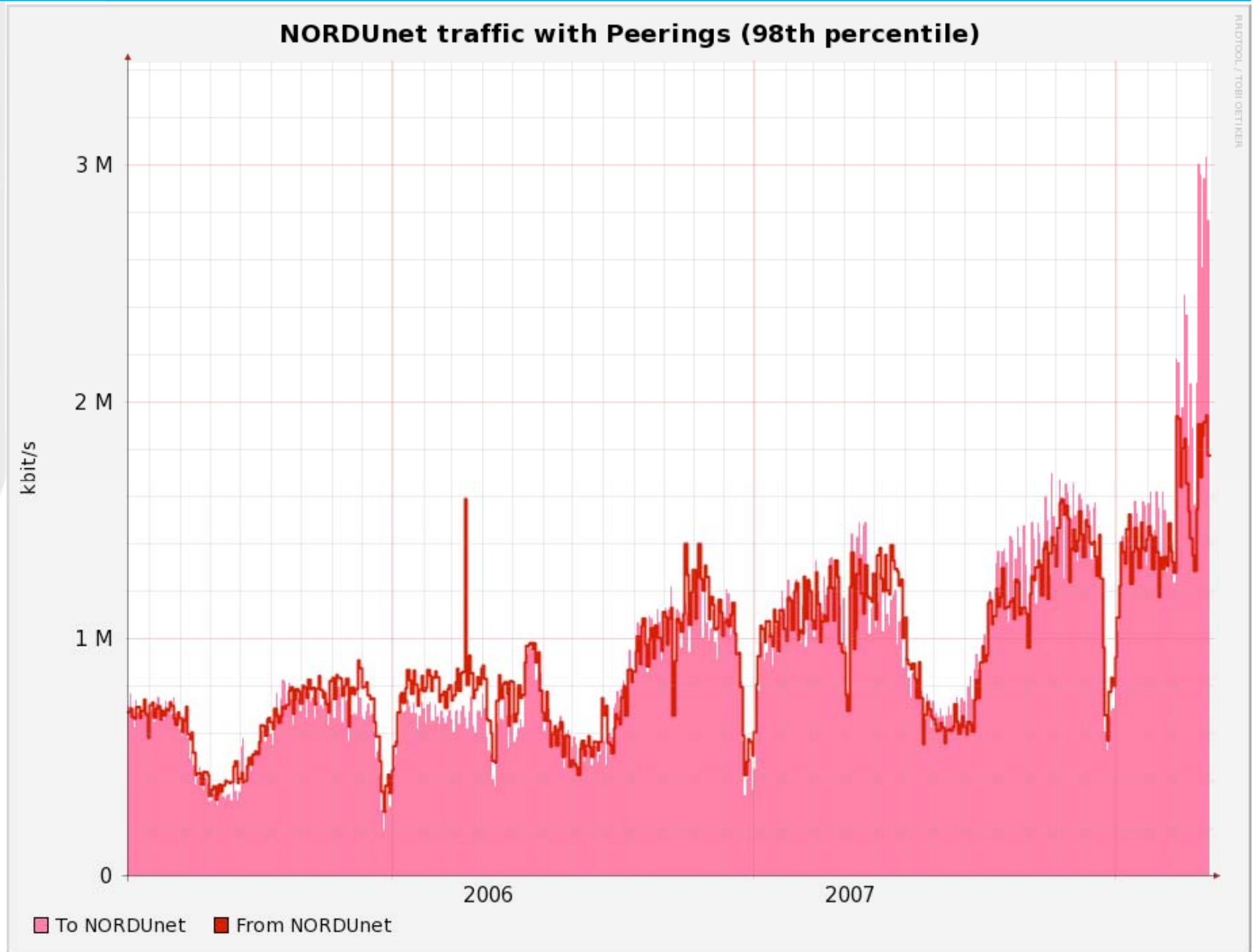
- A Distributed Open Optical Exchange
 - Redundant nodes in Copenhagen, Helsinki, Oslo & Stockholm
 - Connect anywhere, switch connections anywhere
- A GLIF Open Lightpath Exchange
 - Part of GLIF network of GOLEs
- Open
 - To all collaborators, Nordic and international
 - To all types of services



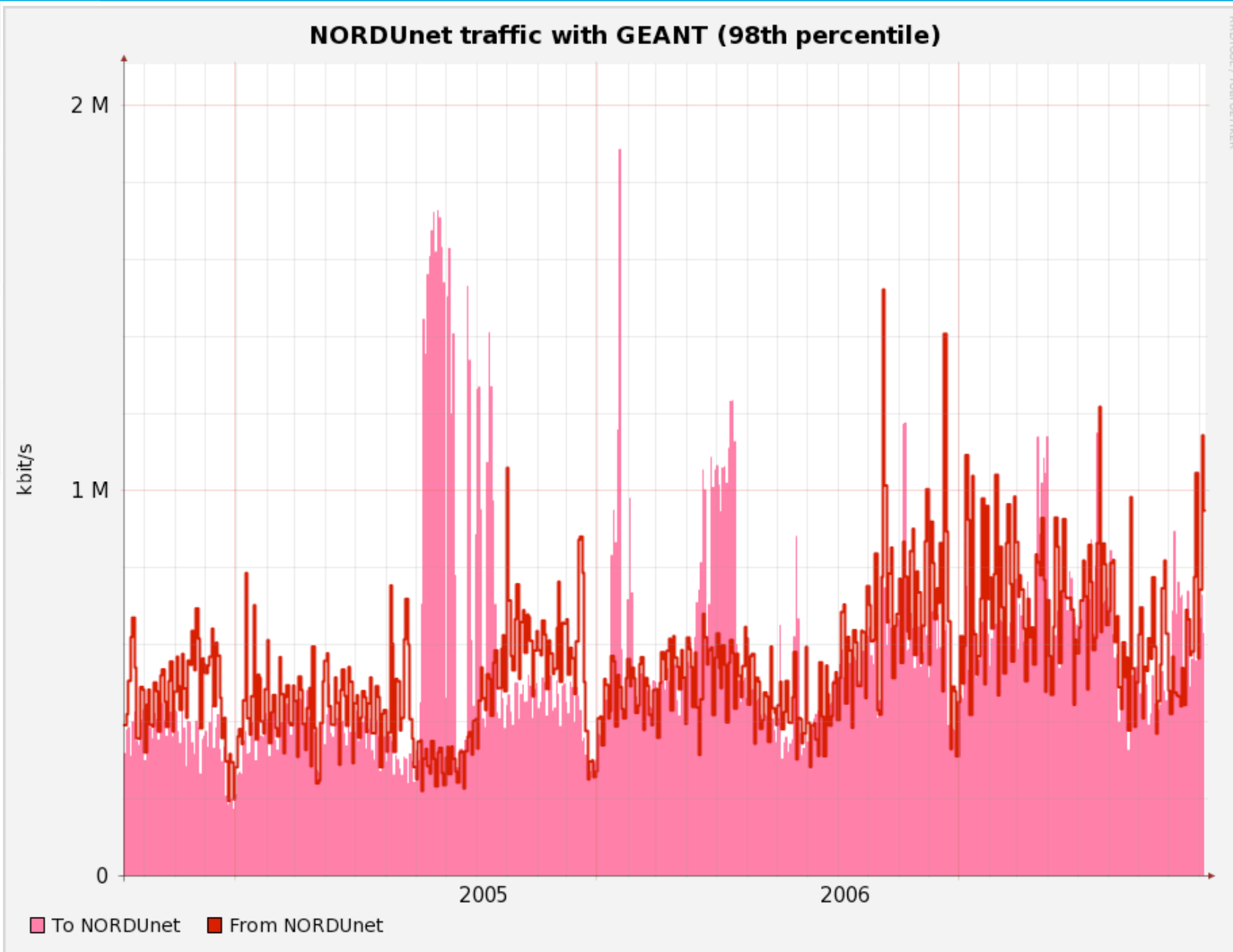


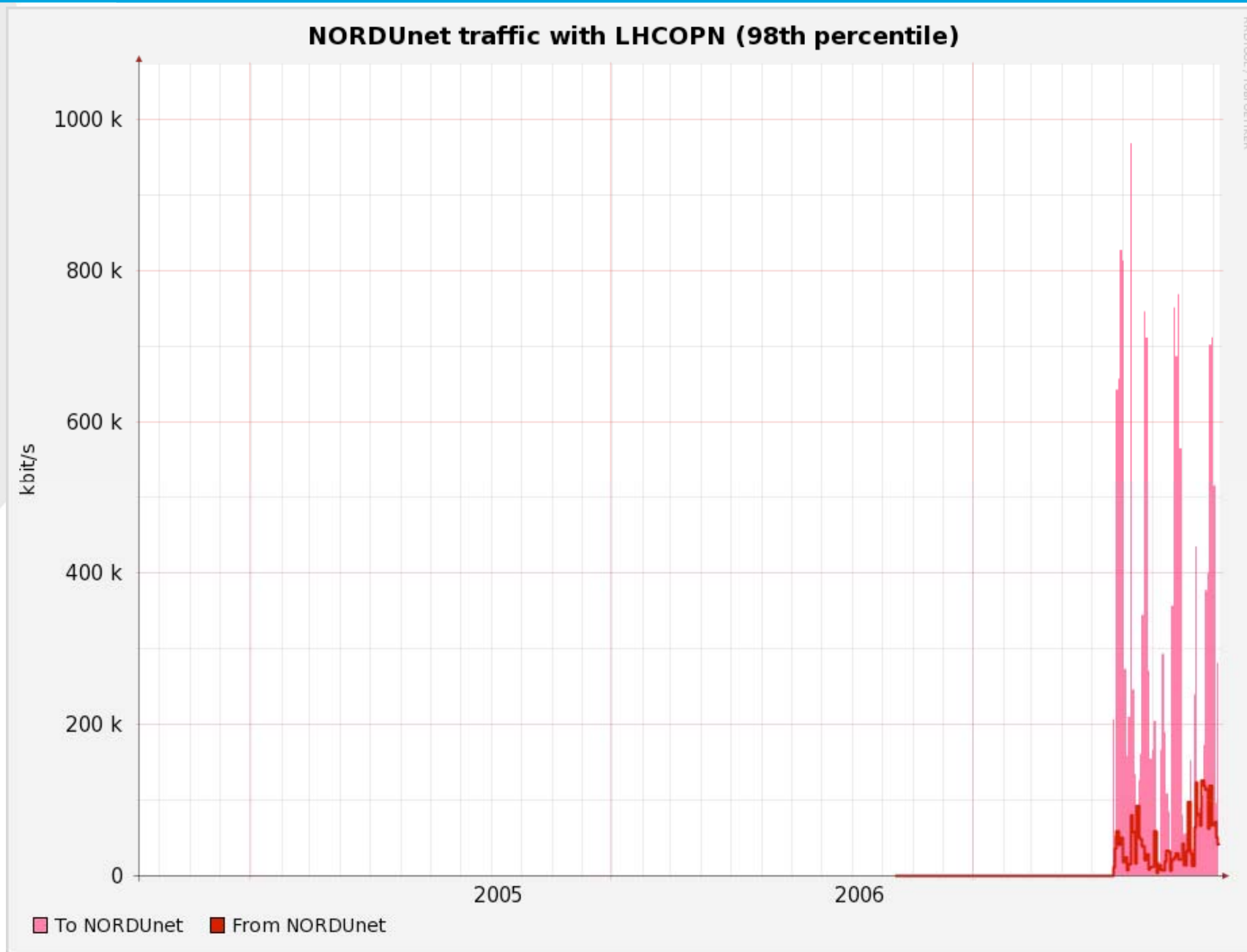
NORDUnet traffic with Commodity_Internet (98th percentile)





NORDUnet traffic with GEANT (98th percentile)





Active Users

- Nordic Tier-1 for CERN LHC (permanent)
 - established: 10 GE Copenhagen - CERN
 - planned: 10 GE Copenhagen -> Amsterdam, Oslo, Stockholm, Helsinki
- DEISA (permanent)
 - established: 10GE Helsinki – Frankfurt
- RBnet – Russian Network Transit (Permanent)
 - Established: 10GE Stockholm-Amsterdam
- RUNnet – Russian Network Connectivity
 - Established: 10GE Helsinki
- GLORIAD (Permanent)
 - Established: 10GE Amsterdam-Stockholm

Nordic Astronomy OPN (for e-VLBI & LOFAR, permanent)

immediate requirement:

- 4 Gbps Onsala - Jodrell Bank (UK)

additional need:

- 1 GE Onsala – Jive
- 1 GE Helsinki – Jive
- 4 Gbps Helsinki – Onsala
- 4 Gbps Helsinki - Jodrell Bank
- 3 Gbps Onsala - Dutch LOFAR site
- Work is in progress on creating an integrated OPN for Nordic astronomy that can encompass all.

Trondheim - Seoul medical imaging

- requirement: 1 Gbps Trondheim - Seoul

Stockholm - Seattle HDTV video conferencing

- requirement: 1 x 1 GE Stockholm - Seattle

Umeå – Amsterdam – 40 Gbit trial

- Requirement: 1xAlien Lambda Stockholm-Amsterdam

GEANT Lambda – Copenhagen Helsinki

- Requirement: 10GB Lambda for GEANT2 Connectivity to Russia



- **Serve the Nordic NRENS**
 - Nail down the Icelandic Connectivity Upgrade
 - The Upgrading Optical Backbone to VSS.
 - Build out Peering connections.
 - Passing the 10 Gbit/sec interface barrier.
 - Testing 40 Gbit/Sec technology.
 - Testing 100 Gbit/sec technology.
 - Integrated management of routers and optical system
 - Cross Platform management
 - OPN Support
 - Build out Portal / WIKI
 - Launch IPTV
 - ...
- **Coordinate NORDIC NREN Development**
 - Nordic Projects
 - GEANT Projects
 - Nordic Community Build
- **eInfrastructure Services**
 - Nordunet3
 - NDGF
 - ...
- **International Dimension**
 - Facilitating and Coordinating Local-Global-Local contacts and project opportunities.
 - GEANT 3 Project Planning
 - Global Projects

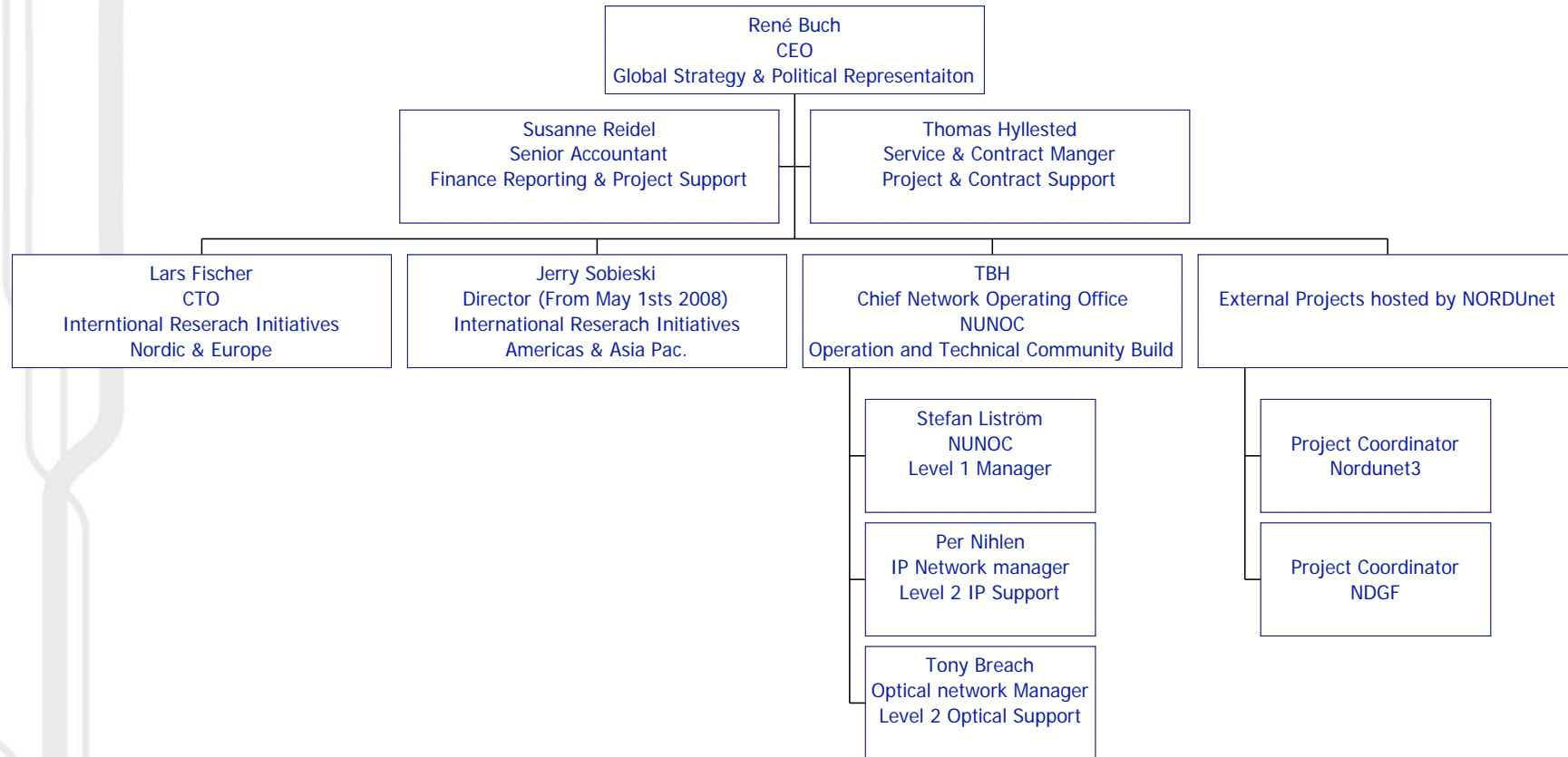


International Research Initiatives is focusing on:

- ◆ Being the main driving force in expanding the International Research Collaboration between the Nordic Countries and global key Research Initiatives and evangelizing the achievements of the Nordic NREN Community and the benefit of working with NORDIC Scientists.
- ◆ Working with global partners facilitating potential projects, contacts and research initiatives to the Nordic NREN community within:
 - eInfrastructure
 - Global Network integration and Network Provisioning Research
 - GRID
 - AAI
 - eScience
 - Astronomy
 - High Energy Physics
 - Environmental Research



NORDUnet Q2 2008



http://www.nordu.net/ndnweb/the_nordunet_team.html



NORDUnet

Nordic Infrastructure for Research & Education

NORDUnet

Nordic Infrastructure for Research & Education



```
10101 11110  
01101 10101  
100110 10010  
010101010001  
111101010001  
11010 0101010  
00000 101010  
01100 01101
```